



KEY LARGO FIRE RESCUE & EMERGENCY MEDICAL SERVICES DISTRICT

Seat 1: Tony Allen; Seat 2: Frank Conklin; Seat 3: Bob Thomas; Seat 4: George Mirabella; Seat 5: Danny Powers

DISTRICT MEETING AGENDA

September 14, 2020

VIRTUAL ZOOM MEETING

Pursuant to Executive Order No. 20-69, Monroe County Emergency Directive 20-06 and Center for Disease Control ("CDC") social distancing guidelines established to contain the spread of the COVID-19 virus, this meeting will be held virtually via Zoom Meetings. Members of the public who wish to comment on matters before the District Board may do so by either: Sending an email to the clerk@klfirems.org or Calling (301) 715-8592, and upon receiving voice prompt, dialing Meeting ID: 602 743 6243 and Password: 33037 *Members of the public who participate in the meeting through this option must mute themselves until called upon to speak.*

Website: <https://us02web.zoom.us/j/6027436243?pwd=Ylp2b3JYckhIQVpwVkFIMmVKbE1uZz09>

1. AGENDA

1a. Call to Order

1b. Roll Call

2. APPROVAL OF AGENDA & MINUTES

2a. Approval of September 14, 2020 District Meeting Agenda

2b. Approval of Minutes

2b.1 August 10, 2020 Budget Workshop Meeting Minutes

2b.2 August 10, 2020 District Meeting Minutes

3. PUBLIC COMMENT

4. CHAIRMAN REPORT

5. SECRETARY REPORT

6. OLD BUSINESS

6a. DISCUSSION: Fire Hydrant Report (Thomas)

6b. DISCUSSION: Emergency Pay Policy (Mirabella)

6c. DISCUSSION: 501c3 Status of the Old KLVFD (Thomas)

7. NEW BUSINESS

7a. MOTION/APPROVAL: Resolution #2020-004 Board Stipends (Jones)



KEY LARGO FIRE RESCUE & EMERGENCY MEDICAL SERVICES DISTRICT

Seat 1: Tony Allen; Seat 2: Frank Conklin; Seat 3: Bob Thomas; Seat 4: George Mirabella; Seat 5: Danny Powers

DISTRICT MEETING AGENDA

(Continued)

September 14, 2020

7b. MOTION/APPROVAL: Resolution #2020-005 Tentative Millage FY 2020-2021 (Johnson)

A RESOLUTION OF THE KEY LARGO FIRE RESCUE AND EMERGENCY MEDICAL SERVICES DISTRICT, FLORIDA, ADOPTING THE TENTATIVE LEVY OF AD VALOREM TAXES FOR THE DISTRICT FOR THE FISCAL YEAR 2020-2021; PROVIDING FOR SEVERABILITY AND PROVIDING AN EFFECTIVE DATE.

7c. MOTION/APPROVAL: Resolution #2020-006 Tentative Budget FY 2020-2021 (Johnson)

A RESOLUTION OF THE KEY LARGO FIRE RESCUE AND EMERGENCY MEDICAL SERVICES DISTRICT, FLORIDA, PROVIDING FOR ADOPTION OF THE TENTATIVE BUDGET OF THE DISTRICT FOR THE FISCAL YEAR COMMENCING ON OCTOBER 1, 2020, AND ENDING ON SEPTEMBER 30, 2021; PROVIDING FOR SEVERABILITY: AND PROVIDING AN EFFECTIVE DATE.

7d. DISCUSSION: Station 24 Maintenance (Front & Side Door) and Station 25 Signage (Conklin)

8. FINANCE REPORT

8a. KLFR&EMS District Finance Report (FY 2019-2020 – 3rd Quarter)

9. LEGAL REPORT

10. AMBULANCE CORPS REPORT

10a. KLVA Monthly Report: 200731

11. FIRE DEPARTMENT REPORT

11a. KLFD Monthly Report: 200731

11b. KLFD Performance Report 200831

11c. KLVD Personnel Gain/Loss Report

12. COMMISSIONER ITEMS

13. NEXT MEETING

13a. KLFR&EMS Final Public Hearing & District Meeting: October 12 or 26, 2020

(See Next Page)



KEY LARGO FIRE RESCUE & EMERGENCY MEDICAL SERVICES DISTRICT

Seat 1: Tony Allen; Seat 2: Frank Conklin; Seat 3: Bob Thomas; Seat 4: George Mirabella; Seat 5: Danny Powers

DISTRICT MEETING AGENDA

(Continued)

September 14, 2020

14. ADJOURN

NEXT MEETINGS

September 21, 2020 Final Public Hearing & District Meeting (Previously 9/28/20)*

* Need to confirm County/School Board 1st & Final Public Hearings

October 12, 2020 District Meeting (if required)

October 26, 2020 District Meeting

November 9, 2020 District Meeting (if required)

November 16, 2020 Strategic Planning Workshop & District Meeting

December 14, 2020 District Meeting

December 21, 2020 District Meeting (if required)

DOCUMENTS

- AI 2a. District Meeting Agenda
- AI 2b.1 Budget Workshop Meeting Minutes 08/10/20
- AI 2b.2 District Meeting Minutes 08/10/20
- AI 06a. Fire Hydrant Report 200907
- AI 06b. Village of Islamorada Emergency Pay Policy
- AI 06b. FEMA Project Worksheet
- AI 07a. Resolution #2020-004 (Board Stipend)
- AI 07b. Resolution #2020-005 Tentative Millage FY 2020-2021
- AI 07c. Resolution #2020-006 Tentative Budget FY 2020-2021
- AI 08a. KLFR&EMS District FY 19-20 3rd Quarter
- AI 10a. KLVAC Monthly Report 200731
- AI 11a. KLFD Monthly Report 200731
- AI 11b. KLFD Performance Report 200831
- AI 11c. KLFD Personnel Gain/Loss Report

*Persons who wish to be heard shall send an email to the clerk or
wait to be called upon in the Zoom Virtual Meeting*



BUDGET WORKSHOP MEETING MINUTES

August 10, 2020 – DRAFT

1. AGENDA

1a. Call to Order

Chairman Allen called the Zoom video conference Budget Workshop to order at 6:05 p.m.

1b. Pledge of Allegiance

Commissioner Powers led the Pledge of Allegiance.

1c. Roll Call

Vicky Fay called the roll. The following Commissioners were present: Tony Allen, Frank Conklin, George Mirabella, Danny Powers and Bob Thomas. There was a quorum.

Also present were: Don Bock, Vicky Fay, David Garrido, Jennifer Johnson, CJ Jones, Gaelan Jones, Esq., Jason Mumper and Scott Robinson.

1d. Approval of Agenda

MOTION: Commissioner Thomas made a motion **to approve the August 10, 2020 Budget Workshop Agenda**. Commissioner Powers seconded the motion, and the Board unanimously passed the motion.

2. PUBLIC COMMENT

No members of the General Public addressed the Board.

3. DISCUSSION: KLFR&EMS Proposed FY 2020-2021 Budget

Jennifer Johnson discussed the changes to the FY 2020-2021 presented on July 27, 2020.

DISTRICT BUDGET

Acct 540 Dues, Subscriptions and Publications: This item was reduced by \$1,000.

FIRE DEPARTMENT BUDGET

The Fire Department moved \$30,000 into the Operations Budget from Capital Outlay, and added \$5,500 to Capital Outlay for a new Toughbook computer.

AMBULANCE CORPS BUDGET

There were no changes to the Ambulance Corps Budget.

The Unassigned Fund Balance on September 30, 2021 is \$2,788,930, and the Committed Fund Balance for the Vehicle Fund is \$580,114. The Total Expenditures and Fund Balances is \$7,215,024. The Chief will email the Fire Department camera information to be included in the next Budget version.



KEY LARGO FIRE RESCUE & EMERGENCY MEDICAL SERVICES DISTRICT

Seat 1: Tony Allen; Seat 2: Frank Conklin; Seat 3: Bob Thomas; Seat 4: George Mirabella; Seat 5: Danny Powers

CJ Jones reported the KLVFD should approve the FY 2020-2021 Budget at the Fire Department meeting on August 11, 2020. The Ambulance Corps has a new ambulance budgeted in 2021 (originally planned for replacement in 2019) and second ambulance budgeted in 2021¹.

4. ADJOURN

MOTION: Commissioner Powers made a motion *to adjourn the Budget Workshop*
At 6:12 pm. This was seconded by Commissioner Mirabella and passed unanimously.

DOCUMENTS

- 1.D. Agenda Budget Workshop for August 10, 2020
- 3.0 KLVFD Proposed Budget FY 2020-2021



KEY LARGO FIRE RESCUE & EMERGENCY MEDICAL SERVICES DISTRICT

Seat 1: Tony Allen; Seat 2: Frank Conklin; Seat 3: Bob Thomas; Seat 4: George Mirabella; Seat 5: Danny Powers

DISTRICT MEETING MINUTES

August 10, 2020 – **DRAFT**

1. **AGENDA**

1a. Call to Order

Chairman Allen called the Zoom video conference District Meeting to order at 6:13 pm.

1b. Roll Call

Vicky Fay called the roll. The following Commissioners were present: Tony Allen, Frank Conklin, George Mirabella, Danny Powers and Bob Thomas. There was a quorum.

Also present were: Don Bock, Vicky Fay, David Garrido, Jennifer Johnson, C.J. Jones, Gaelan Jones, Esq., Jason Mumper and Scott Robinson.

2. **APPROVAL OF AGENDA & MINUTES**

2a. Approval of August 10, 2020 District Meeting Agenda

Chairman Allen changed Agenda Item 7d. from Discussion to a Motion/Approval for the LifePak as the quote was received from Stryker.

2b. Approval of Minutes

2b.1 July 27, 2020 Budget Workshop Meeting Minutes

MOTION: Commissioner Powers made a motion ***to approve the July 27, 2020 Budget Workshop Meeting Minutes***, which was seconded by Commissioner Mirabella, and the Board unanimously passed the motion.

2b.2 July 27, 2020 District Meeting Minutes

MOTION: Commissioner Thomas made a motion ***to approve the July 27, 2020 District Meeting Minutes***, which was seconded by Commissioner Powers, and the Board unanimously passed them Motion.

3. **PUBLIC COMMENT**

There were no comments from the General Public.

4. **CHAIRMAN REPORT**

There were no items reported by the Chairman Allen.

5. **SECRETARY REPORT**

Commissioner Mirabella did not have any items to report to the Board.



KEY LARGO FIRE RESCUE & EMERGENCY MEDICAL SERVICES DISTRICT

Seat 1: Tony Allen; Seat 2: Frank Conklin; Seat 3: Bob Thomas; Seat 4: George Mirabella; Seat 5: Danny Powers

6. **OLD BUSINESS**

6a. **Discussion: Fire Hydrant Report**

Commissioner Thomas provided a Phase 8 Fire Hydrant Project update.

6b. **Discussion: Emergency Pay Policy**

The Board discussed the Marathon Emergency Pay Policy and the Department's State of Emergency Pay Policies. The FEMA Hurricane Irma Project Worksheet and the Village of Islamorada's Emergency Pay Policy will be distributed to the Commissioners.

7. **NEW BUSINESS**

7a. **DISCUSSION: KLFR&EMS District Commissioner Stipends**

Gaelan Jones discussed the Florida Statute special meeting and advertising requirements. He presented two resolution versions for commissioner stipends to the Board for their consideration.

Commissioner Thomas made a motion to approve an increase in board compensation, prohibiting acceptance by current board members. The motion died for a lack of a second.

Commissioner Powers indicated he would not receive additional compensation for the newly-elected term, and Commissioners Allen and Conklin indicated they would not receive additional compensation for the current term.

MOTION: Commissioner Powers made a motion ***to approve an increase in Board compensation, without prohibiting current board members from accepting the increase.*** Commissioner Conklin seconded, and the vote was as follows: Allen (Yes), Conklin (Yes), Mirabella (Yes), Powers (Yes) and Thomas (No).

MOTION: Commissioner Mirabella made a motion ***to approve raising the Board compensation from \$200 per month to \$350.00 per month.*** Commissioner Conklin seconded, and the vote was as follows: Allen (Yes), Conklin (Yes), Mirabella (Yes), Powers (Yes) and Thomas (No).

Legal and the Clerk will coordinate the special 14-day meeting notice/advertising in accordance with Florida Statutes to announce the proposed compensation increase with the ability to waive for final adoption approval.

7b. **DISCUSSION: Regain Old Building/Land for Firefighters**

At the time of the 2013 transition both the land and the building belonged to the Old Key Largo Volunteer Fire and Rescue, Inc. Department and not the County. Chairman Allen toured the facility and encouraged the other commissioners to visit the facility, which is being converted to a museum.

Gaelan Jones discussed the steps required by the District to pursue eminent domain. The District must first attempt to negotiate a voluntary sale of the property; if that fails, the District may pursue an eminent domain claim, but would be obligated to offer "full compensation" to the property owner which can include the fair market value of the property as well as the attorney's fees incurred by the owner in defending the claim.



KEY LARGO FIRE RESCUE & EMERGENCY MEDICAL SERVICES DISTRICT

Seat 1: Tony Allen; Seat 2: Frank Conklin; Seat 3: Bob Thomas; Seat 4: George Mirabella; Seat 5: Danny Powers

7c. DISCUSSION: KLVFD Political Activity & SOP 100.03

Gaelan Jones presented the Fire Department's Political Activity Policy and SOP 100.03. The documents were discussed and drafted at the contract renewal with Chief Bock, Jack Bridges and Gaelan Jones. The development of these documents were a contract renewal requirement, and they are being submitted to the Board for input.

7d. MOTION/APPROVAL: Replacement of Life Pak

Chief Bock discussed the need to replace the LifePak. The quote is for an older model and includes a trade-in value.

MOTION: Commissioner Thomas made a motion *to waive the Purchasing Policy and approve a Sole Source purchase from Stryker Medical for a LifePak in the amount of \$16,545.00.* Commissioner Powers seconded the motion, and the motion passed unanimously.

7e. DISCUSSION: Repair of Ladder Truck

The Ladder Truck is expected to go to the vendor today or tomorrow for a quote. The quote is expected to take a week to a week and a half to prepare and is estimated to be \$15,000 to \$20,000.

8. FINANCIAL REPORT

There were no new items presented by Finance.

9. LEGAL REPORT

Legal did not have any new items to present to the Board.

10. AMBULANCE CORPS REPORT

Scott Robinson reported three part-time paramedics were tested.

11. FIRE DEPARTMENT REPORT

Captain Garrido reported the vehicles passed the fire pump tests. The department has nine new volunteers; there are several drivers in training; however, the department is losing firefighters quickly as they are being hired by other departments.

12. COMMISSIONER ITEMS

12a. Strategic Plan Action Plan 200803

The Departments are working on their 5-Year Business Plan, which includes becoming District employees, a merged/combination department or remaining as separate departments.

The firefighters Health Insurance coverage was discussed. Jennifer Johnson will provide new health insurance costs to the department to be included in the next budget proposal.

Commissioner Allen discussed a concern of disparity in the Firefighter step plan. When step plan increases are awarded, the department needs to ensure the firefighter's hourly rate for each step is adjusted accordingly. The Chief will send the firefighter pay scales to Commissioner Allen.



KEY LARGO FIRE RESCUE & EMERGENCY MEDICAL SERVICES DISTRICT

Seat 1: Tony Allen; Seat 2: Frank Conklin; Seat 3: Bob Thomas; Seat 4: George Mirabella; Seat 5: Danny Powers

13. NEXT MEETING

13a. District Budget Workshop & District Meeting August 24, 2020

14. ADJOURN

MOTION: Commissioner Mirabella ***made a motion to adjourn the meeting at 8:03 p.m.*** This was seconded by Commissioner Powers and the motion passed unanimously.

NEXT MEETINGS

August 24, 2020 District Budget Workshop & District Meeting

*September 14, 2020 1st Public Hearing & District Meeting**

*September 21, 2020 Final Public Hearing & District Meeting (Previously 9/28/20)**

** Need to confirm County/School Board 1st & Final Public Hearings*

DOCUMENTS

AI 2a. District Meeting Agenda

AI 2b.1 Budget Workshop Meeting Minutes 07/27/20

AI 2b.2 District Meeting Minutes 07/27/20

AI 06a. Fire Hydrant List 200803

AI 06b. Marathon Emergency Pay Plan

AI 06b. Marathon Firefighter Agreement

AI 06b. KLVAC State of Emergency Pay Plan

AI 06b. KLVFD State of Emergency Pay Plan

AI 07a. Proposed Resolution District Commissioner Stipend, Version 1

AI 07a. Proposed Resolution District Commissioner Stipend, Version 2

AI 07c. KLVFD Political Activity Policy 2020-07-20 2020-01

AI 07c. KLVFD SOP 100.03 Professional Expectation Behavior

AI 07d. KLVAC Stryker LifePak Quote

AI 10a. KLVAC Call Log 200630 (Not Received)

AI 11b. KLVFD Performance Report 200731

AI 12a. Strategic Plan Action Plan 200803

PHASE 8 (2019-2020)	HYDRANT LOCATION	SUB DIVISION	9/7/2020
19-01	US1 (Southbound) and Coastal Drive Entrance	Coastal Drive &	Operational
19-02	US 1 Southbound MM 97 (Budget Car rental 97300 Overseas Highway	Overseas Highway	Operational
19-03	US1 and Second Ave	Second Avenue	Operational
19-04	US1 SB 97340 O/S Hwy 97340 O/S Hwy - FDOT Approval Required	97340 Overseas Hwy	Pending FD Inspection
19-05	Kay Drive and West Avenue A	Kay Drive	CHANGE ORDER #2 - Pending Permit
19-06	US1 NB (Catamaran Boatyard 97951 O/S Hwy)	97951 Overseas Hwy	Operational
19-07	Coco Plum Road South (mm 98)		Operational
19-08	US 1 SB (in front of Keys Bite 99000 Overseas Highway	99000 Overseas Hwy	Operational
19-09	US1 (EMS BLDG. Northbound or Southbound) (98600 O/S Hwy)	98600 Overseas Hwy	Operational
19-10	Cable Road 1st Baptist Church	Overseas Highway	Operational
19-11	US1 NB (Next to Discount auto parts) 99256 O/S Hwy	99256 Overseas	Operational
19-12	Circle K - 99810 O/S Hwy	99810 Overseas Hwy	Operational
19-13	US1 NB (Next to conch house) 100210 o/s Hwy	100210 Overseas Hwy	Operational
19-14	101377 O/S Hwy (Arby's)	101377 Overseas Hwy	Operational
19-15	Samson Road (Entrance to KMART)		CHANGE ORDER #1 - Pending Permit
19-16	95710 Overseas Hwy (Harriett's)	95710 Overseas Hwy	Operational

Level 3 – Monitoring phase:

Routine operations continue for Village departments. Individual departments handle smaller incidents. Other staff may be involved as advisors if needed for specific expertise. Depending on the threat, the Village OEM will engage in conference calls with other local, state and/or federal agencies, provide frequent public service announcements via the OEM website or email Flash Alerts, disseminate Severe Weather Bulletins, etc. Village departments review plans, stockpile supplies and top off vehicles, as needed.

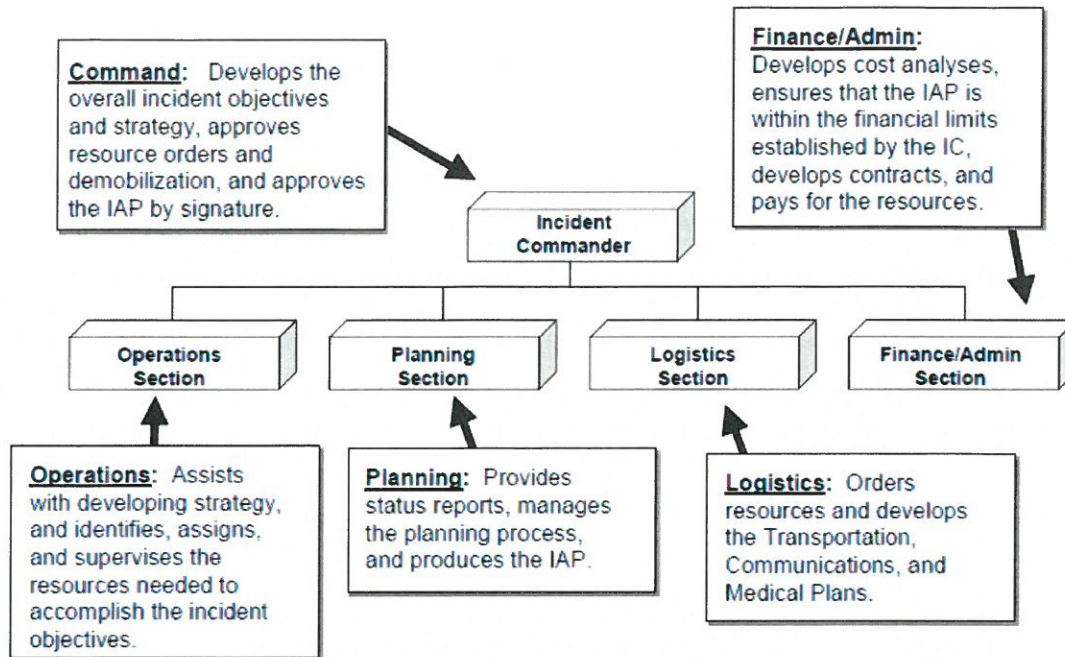
Level 2 – Partial EOC activation:

An incident is or could potentially grow beyond the capability of the individual departments to handle. In this instance, the Emergency Manager, along with select staff, are tasked to support the incident from the Village EOC. Revenue and Finance will secure a “Project Number” for all disaster activities. Any one or a combination of the following individuals will make the decision on whether an incident meets the criteria for Level 2:

- Mayor
- Village Manager
- Emergency Manager

As a general rule, transition from Level 3 to Level 2 will automatically occur when:

- A Village department has activated its disaster plan and requires deployment of their resources.
- Multiple Village departments have deployed staff to the field.
- Intelligence data indicates the potential for an emergency that is or may grow beyond the capability of affected departments.
- At this phase, one or more persons may be initially tasked to the following core IMT functions:
 - EOC Manager
 - Operations
 - Information, Situation Analysis, Planning
 - Logistics
 - Administrative
 - Public Information
 - Telecommunications
 - Selected other agencies, as needed



4. The Village EOC is activated and managed by the Emergency Manager or designee. When activated, designated members of the Village IMT will provide representation at the Village EOC. Under activation status, departments will ensure designated Village EOC positions are staffed on a 24-hour basis. Twelve-hour shifts, with shift changes at 7 a.m. and 7 p.m. will be followed for major events. Eight-hour shifts, with shift changes at 7 a.m., 3 p.m. and 11 p.m. will be followed for special, non-emergency events. Deviations to this schedule must be cleared with the Emergency Manager and Village Manager.

5. The Village EOC may be activated at different levels, see *Appendix B*, depending on the status of the emergency or disaster situation:
 - a) **Level 4 – Normal Operations.** Situational awareness which takes place on a daily basis.
 - b) **Level 3 - Monitoring phase.** Notifications made to select Village EOC IMT members as deemed appropriate.
 - c) **Level 2 - Partial Village EOC activation.** Core group and others will respond as required in the Village EOC. The total Village EOC Organization is alerted. The Village EOC is under extended hours of operations (possible 24 hours).
 - d) **Level 1 - Full Village EOC activation.** The total Village EOC Organization is in the Village EOC at 24-hour operations.

- 6) Ensure emergency responders properly follow protocol and have appropriate protective gear;
- 7) Identify the most appropriate decontamination and/or treatment for victims;
- 8) Establish victim services;
- 9) Notify emergency personnel, including medical facilities, of dangers and anticipated casualties and proper measures to be followed;
- 10) Notify appropriate county, state and federal agencies;
- 11) Provide accurate and timely public information;
- 12) Preserve as much evidence as possible to aid in the investigation process;
- 13) Protect critical infrastructure;
- 14) Manage fatalities and the protection of remains;
- 15) Protect property and environment;

iv. Level Two, Partial Activation

- 1) The Village EOC will not be activated pre-event for most Homeland Security National Advisory changes without any specific threat information for the Village or county and/or surrounding areas. However, when deemed a terrorist event, the Village EOC will conduct a limited activation with limited IMT staffing. The primary objective will be to secure resources through the Village EOC, County EOC, Regional Domestic Security Task Force, State of Florida and the Federal Government.
- 2) The Village Manager, in consultation with the Executive Policy Group, will decide on closing or limiting Village business and/or services and recommend cancellation of other public social events.

18. Public Health Emergency

- a) The United States and all political subdivisions are subject to an incursion of various infectious diseases. Such outbreaks could be widespread and involve more than one municipality, requiring close coordination with health officials at local, state, and federal levels. The State Department of Health is the Lead Agency for all public health related outbreaks. Receipt & distribution of Strategic National Stockpile will be in concert with current Department of Health policies. Health policies will be coordinated with the Village and County Emergency Management.

b) EOC Activation

- i. The Village EOC activation may be necessary and will be evaluated by the Village EM as conditions warrant. The Village EM will inform the Village Executive Policy Group for any necessary EOC activations.**

D. REIMBURSEMENT/FINANCE

In coordination with the EOC IMT, a recommendation to the Village Manager and Mayor, on the activation of stand-by contracts for FEMA Public Assistance, Individual Assistance and any applicable insurance claims, if not previously done so. (*Appendix K*)

E. TRAINING & EXERCISES

1. General

Training to support hazardous weather operations is on-going and recurring. The State Division of Emergency Management (DEM) and Federal Emergency Management Agency (FEMA) provide a variety of training courses, as well as Independent Study Courses, at no expense to the individual. The Village OEM can develop a tailored training program for any agency desiring the service.

2. Training Program Development & Implementation

Each Village employee is required to obtain the minimum base-line NIMS training. Most of this training is on-line.

3. Training Exercise

The Village OEM conducts an annual Disaster/Hurricane and Mass Casualty exercise. Departments are strongly encouraged to request their own tabletop exercises, especially when procedures and/or equipment change. The Village also participates in the annual county and statewide hurricane exercise conducted in the spring timeframe.

Department of Homeland Security Federal Emergency Management Agency

General Info

Project #	13974	Project Type	Work Completed / Fully Documented
Project Category	B - Emergency Protective Measures	Applicant	Key Largo Fire Rescue & Emergency Medical Services District (087-UXBX7-00)
Project Title	Emergency Protection Sept 4- Oct 3	Event	4337DR-FL (4337DR)

Damage Description and Dimensions

The Disaster # 4337DR, which occurred between 09/04/2017 and 10/18/2017, caused:

Damage # 208331; Emergency Protective Measures (Labor, Equipment and Supplies related to Emergency Response)

During the incident period of 9/4/2017 through 10/18/2017, Hurricane Irma created an immediate threat to the health and safety of the general public requiring emergency response and protective measures.

- Provided Emergency Operations Center for fire fighting and emergency services at Station 23-Key Largo Volunteer Ambulance Corp, 98600 Oversea Drive, Key Largo, FL 33037 and Station 25-Key Largo Vouneer Fire Department, 220 Reef Dr., Key Largo, FL 33037 from 9/7/2017 to 9/23/2017.

Final Scope

208331 Labor, Equipment and Supplies related to Emergency Response

Work Completed

The applicant utilized Contracts with two non-profit organizations, Key Largo Fire Department and Key Largo Emergency Medical Services, Force Account Equipment (FAE), and Force Account Materials (FAM), for Emergency Protective Procedures throughout the town of Key Largo, Florida. Locations listed as:

Station 23-Key Largo Volunteer Ambulance Corp, 98600 Oversea Hwy, Key Largo, FL, 33037, Latitude: 25.083980 Longitude: -80.452020

Station 25-Key Largo Volunteer Fire Department, 220 Reef Dr., Key Largo, FL, 33037, Latitude: 24.173240 Longitude: -80.373150

Cost share for this version is 100%. All work and cost in this project fall between 9/7/2017 and 9/23/2017.

Contract

Key Largo Fire Dept. – (KLFD-Paid Staff)

- A. Additional time and expenses under a contract of the Key Largo Fire and Rescue that was incurred during their response for the additional time and expenses incurred by the immediate threat to health and safety of the general public requiring emergency response and protective measures. (*Scope Notes 1,2,3 & 4*)

1. Extra Shifts Contract Labor 70 individuals - 844.93 hours = \$29,765.56

2. Increased Cost Due Storm – 69 individuals – 817.75 hours = \$15,383.98

Key Largo Fire Department (KLFD)

- A. Additional time and expenses under a contract of the Key Largo Fire and Rescue that was incurred during their response for the additional time and expenses incurred by the immediate threat to health and safety of the general public requiring emergency response and protective measures. *(This Group is described by name as Volunteers, but they are paid by a non-profit organization that is contracted with the town of Key Largo.) (Scope Notes 1,2,3 & 4)*
 1. Extra Shifts Contract Labor 175 individuals – 2,100.0 hours = \$11,018.00

Key Largo Emergency Services – (KLEMS-Paid Staff)

- A. Additional time and expenses under a contract of the Key Largo EMS that was incurred during their response for the additional time and expenses incurred by the immediate threat to health and safety of the general public requiring emergency response and protective measures. *(Scope Notes 1,2,3 & 4)*
 1. Extra Shifts Labor 21 individuals – 249.0 hours = \$5,355.69
 2. Increased Cost Due Storm – 62 individuals – 743 hours = \$4,828.58

Key Largo Emergency Services (KLEMS)

- A. Additional time and expenses under a contract of the Key Largo EMS that was incurred during their response for the additional time and expenses incurred by the immediate threat to health and safety of the general public requiring emergency response and protective measures. *(This Group described by name as Volunteers, but they are paid by a non-profit organization that is contracted with the town of Key Largo.) (Scope Notes 1,2,3 & 4)*
 1. Additional Contract Labor 44 individuals – 528.0 hours = \$3,653.76
 2. Payroll Taxes on Extra Shifts & Increased Cost – at 7.65% = \$5,355.43 *(Scope Note 5)*

Work Completed Totals

1. Contracted = \$75,361.00
2. Force Account Owner's Equipment used by Contractor – 553.28 hours - \$21,572.13 *(Scope Note 6)*
3. Materials - \$1,817.34 *(Scope Note 7)*

Direct Administrative Cost: The applicant is claiming DAC Costs for gathering documentation and meetings with FEMA to discuss the project.
DAC Contracted – 1 individual – 16.90 hours - \$2,112.50 *(Scope Note 8)*

Total Damage Inventory: \$100,862.97

Scope notes:

1. The District has lawful authority granted to it in Chapter 2005-329, organized and existing under Chapters 189 and 191, Laws of Florida, to provide advanced life support ambulance services and to provide fire protection, fire suppression, rescue services, and control of hazardous situations by contract. The District contracts with two not-for-profit entities for both fire & rescue and emergency services. See file named Contract w Departments 2016 thru 2019 161017 Executed.pdf.
2. *Some files in the project are named as Force Account Labor, however all labor cost associated with this project are paid for under the contract conditions to one of the not-for-profit entities. (see file name (invFire Dept Payroll Reimb 9-7 - 9-10\$8957.86.pdf); (invFire Dept Payroll Reimb 9-10 - 9-24\$50693.72.pdf); (invFire Dept Payroll Reimb J Mumper 9-10 - 9-24\$1858.13.pdf); (invFire Dept Payroll Reimb M Golling 9-10 - 9-24\$762.68.pdf); (invKLVFD Volunteer Reimbursement September 2017\$23896.03.pdf); (invKLVAC check request for FT payroll reimb - IRMA\$21129.12.pdf); (invKLVAC Payroll Tax Reimbursement 9-22\$1233.95.pdf); (invKLVAC Payroll Tax Reimbursement 10-20\$1054.54.pdf))*
3. Some of the files in the project refer to Volunteer Labor, however all labor cost associated with this project are paid for under the contract agreement to one of the not-for-profit entities. See file name *(invKLVFD Volunteer Reimbursement September 2017\$23896.03.pdf)*
4. Payroll policies for both Key Largo EMS and Key Largo Fire Department have been provided and reviewed. See file named *(AI 160523 07.G KLVFD Policy Work Schedule.pdf); (AI 160523 07.H KLVAC Policy Work Schedule.pdf)*
5. CRC validation noted a math error in the payroll taxes associated with the increase labor and extra shifts. CRC validated out \$1,546.26 in payroll taxes. The formula in the claimed data referenced a sum (49,793.01+20,212.56=70,005.57) and then added a cell that added the sum (20,212.56) back in again before multiplying by the tax percent. The validation effort corrected the math to the correct sum for the tax

calculation. (see *CONTRACT BACKUP tab of file labeled DR 13974 FL-CRC DVS Validation Spreadsheet.xlsx.*)

6. All force account equipment is used by the contract labor at no cost to the not-for-profit entity contractor and is owned and maintained by the owner.
7. Materials were food and water for the crews and staff. See document named *(Force Account Materials - KLFR&EMS District.pdf)*
8. DAC labor is provided under contract with a Public Accounting Firm. See file named *(Bishop & Rosasco KLFREMS Engagement.pdf)*; *(DAC invoice.pdf)*
9. All procurement documents have been provided and reviewed. See file named *(KLFR&EMS District Purchasing Policy 9-22-14.pdf)*; *(Contract w Departments 2016 thru 2019 161017 Executed.pdf)*

Project Notes:

1. All cost associated with this project have been validated. See validation document labeled *DR 13974 FL-CRC DVS Validation Spreadsheet.xlsx.*

Cost

Code	Quantity	Unit	Total Cost	Section
9009 (Material)	1.00	Lump Sum	\$1,817.34	Completed
9901 (Direct Administrative Costs (Subgrantee))	1.00	Lump Sum	\$2,112.50	Completed
9008 (Equipment)	1.00	Lump Sum	\$21,572.13	Completed
9003 (Contract Costs)	1.00	Lump Sum	\$75,361.00	Completed

CRC Gross Cost \$100,862.97

Total Insurance Reductions \$0.00

CRC Net Cost \$100,862.97

Federal Share (100.00%) \$100,862.97

Non-Federal Share (0.00%) \$0.00

Subgrant Conditions

- As described in 2 CFR, Part 200 § 200.333, financial records, supporting documents, statistical records and all other non-Federal entity records pertinent to a Federal award must be retained for a period of three (3) years from the date of submission of the final expenditure report or, for Federal awards that are renewed quarterly or annually, from the date of the submission of the quarterly or annual financial report, respectively, as reported to the Federal awarding agency or pass-through entity in the case of a sub-recipient. Federal awarding agencies and pass-through entities must not impose any other record retention requirements upon non-Federal entities. Exceptions, Part 200.333, (a) – (f), (1), (2). All records relative to this Project Worksheet are subject to examination and audit by the State, FEMA and the Comptroller General of the United States and must reflect work related to disaster-specific costs.
- In the seeking of proposals and letting of contracts for eligible work, the Applicant/Subrecipient must comply with its Local, State (provided that the procurements conform to applicable Federal law) and Federal procurement laws, regulations, and procedures as required by FEMA Policy 2 CFR Part 200, Procurement Standards, §§ 317-326.
- The Subrecipient requested Direct Administrative Costs (DAC) that are directly chargeable to this project. Associated eligible work is related to administration of the PA project only and in accordance with 2 CFR §§ 200.413. These costs are treated consistently and uniformly as direct costs in all federal awards and other Subrecipient activities and are not included in any approved indirect cost rates.
- The Recipient must submit its certification of the applicant's completion of all of its small projects and compliance with all environmental and historic preservation requirements within 180 days of the applicant's completion of its last small project.
- The terms of the FEMA-State Agreement are incorporated by reference into this project award under the Public Assistance grant and the applicant must comply with all applicable laws, regulations, policy, and guidance. This includes, among others, the Robert T. Stafford Disaster Relief and Emergency Assistance Act; Title 44 of the Code of Federal Regulations; FEMA Policy No. 104-009-2, Public Assistance Policy and Program Guide; and other FEMA policy and guidance.
- The DHS Standard Terms and Conditions in effect as of the date of the declaration of this major disaster are incorporated by reference into this project award under the Public Assistance grant, which flow down from the Recipient to subrecipients unless a particular term or condition indicates otherwise.
- The Uniform Administrative Requirements, Cost Principles, and Audit Requirements set forth at 2 C.F.R. pt. 200 apply to this project award under the Public Assistance grant, which flow down from the Recipient to all subrecipients unless a particular section of 2 C.F.R. pt. 200, the FEMA-State Agreement, or the terms and conditions of this project award indicate otherwise. See 2 C.F.R. §§ 200.101 and 110.
- The applicant must submit a written request through the Recipient to FEMA before it makes a change to the approved scope of work in this project. If the applicant commences work associated with a change before FEMA approves the change, it will jeopardize financial assistance for this project. See FEMA Policy No. 104-009-2, Public Assistance Program

Insurance

Additional Information

FINDINGS

The applicant has provided claim document from the American Alternative Insurance Corporation, Policy# VFISCR2054345-01.

The emergency measures noted in this project are typically not covered by insurance. To date, the applicant has not provided final insurance settlement documentation. Therefore, no insurance reduction will be taken.

A final insurance review will be completed a closeouts to reconcile any differences in scope of work and/or actual insurance proceeds the applicant may receive relating to all insurance claims documenting damages noted in this project.

FEMA requires the Applicant to take reasonable efforts to pursue claims to recover insurance proceeds that it is entitled to receive from its insurer(s). In the event that any insurance proceeds are received for these expenses those proceeds must be reduced from FEMA Public Assistance funding to ensure no duplication of benefits has occurred.

No duplication of benefits from insurance is anticipated for work described in this application. In the event any part or all costs are paid by an insurance policy, a duplication of benefits from insurance will occur. Applicant must notify grantee and FEMA of such recoveries and the Sub- Grant amount must be reduced by actual insurance proceeds.

REQUIREMENTS

No insurance requirements will be placed on this project. Insurance requirements are specific to permanent work to replace, restore, repair, reconstruct, or construct buildings, contents, equipment and vehicles (FEMA Recovery Policy FP 206-086-1).

-Crystal Covington, PA Insurance Specialist CRC Winchester, VA

O&M Requirements

There are no Obtain and Maintain Requirements on **Emergency Protection Sept 4- Oct 3**.

Environmental Historical Preservation

Is this project compliant with EHP laws and orders?

Yes

EHP Conditions

- Any change to the approved scope of work will require re-evaluation for compliance with NEPA and other Laws and Executive Orders.
- This review does not address all federal, state and local requirements. Acceptance of federal funding requires recipient to comply with all federal, state and local laws. Failure to obtain all appropriate federal, state and local environmental permits and clearances may jeopardize funding.
- If ground disturbing activities occur during construction, applicant will monitor ground disturbance and if any potential archaeological resources are discovered, will immediately cease construction in that area and notify the State and FEMA.

EHP Additional Info

There is no additional environmental historical preservation on **Emergency Protection Sept 4- Oct 3**.

Final Reviews

Final Review

Reviewed By Lee, Jerry B.

Reviewed On 02/11/2019 2:05 PM EDT

Review Comments

Project ready for state review

Recipient Review

Reviewed By Kincl, Barry

Reviewed On 02/28/2019 4:37 PM EDT

Review Comments

Approve as per 2019.02.15 Memo - Validation SOP

Project Signatures

Signed By Johnson, Jennifer

Signed On 02/28/2019

KLVFD & KLVAC IRMA Financial Tracker for FEMA

											Total extra shifts and increased contract costs due to increased storm pay rate				Total Reimbursement Request for contract labor
1 = Extra staff	Name:		Date:	Time In:	Time Out:	Total Hours	Hourly Rate	Total:	Total Extra Shifts	Increased contract costs due to storm coverage	Related Payroll Taxes				
			9/7/2017												
1	62.96	KLFD	Bohl, Andy	7:00	19:00	12:00	5.25	62.96		\$4,277.20					
	0	KLFD	Conord, Don	7:00	19:00	12:00	5.25	62.96							
	0	KLFD	Conord, Don	19:00	7:00	12:00	5.25	62.96							
	0	KLFD	De Las Cuevas, Fabio	7:00	19:00	12:00	5.25	62.96							
	0	KLFD	De Las Cuevas, Fabio	19:00	7:00	12:00	5.25	62.96							
	0	KLFD-Paid Staff	Garcia, Fernando	7:00	19:00	12:00	35.96	431.52							
			Garcia, Fernando												
	0	KLFD-Paid Staff		19:00	7:00	12:00	35.96	431.52							
	0	KLFD-Paid Staff	Garcia, Sergio Jr.	7:00	19:00	12:00	35.96	431.52							
			Garcia, Sergio Jr.												
	0	KLFD-Paid Staff		19:00	7:00	12:00	35.96	431.52							
1	431.52	KLFD-Paid Staff	Mumper, Jason	7:00	19:00	12:00	35.96	431.52							
1	431.52	KLFD-Paid Staff	Mumper, Jason	19:00	7:00	12:00	35.96	431.52							
	0	KLEMS	Oporta, Ozzie	7:00	19:00	12:00	6.92	83.04							
	0	KLEMS	Oporta, Ozzie	19:00	7:00	12:00	6.92	83.04							
	0	KLEMS	Perrotti, John	7:00	19:00	12:00	6.92	83.04							
	0	KLEMS	Perrotti, John	19:00	7:00	12:00	6.92	83.04							
	0	KLEMS-Paid Staff	Arana, Jaime	7:00	19:00	12:00	21.69	260.28							
			Arana, Jaime												
	0	KLEMS-Paid Staff		19:00	7:00	12:00	21.69	260.28							
	0	KLEMS-Paid Staff	Pinzon, Oscar	7:00	19:00	12:00	21.69	260.28							
			Pinzon, Oscar												
	0	KLEMS-Paid Staff		19:00	7:00	12:00	21.69	260.28							
	Date:	Name:	Time In:	Time Out:	Total Hours	Hourly Rate	Total:	Total Personnel Costs							
			9/8/2017												
1	431.52	KLFD-Paid Staff	Arana, Jaime	7:00	19:00	12:00	35.96	431.52		\$6,373.80					
1	431.52	KLFD-Paid Staff	Arana, Jaime	19:00	7:00	12:00	35.96	431.52							
1	62.96	KLFD	Bohl, Andy	7:00	19:00	12:00	5.25	62.96							

	0	KLFD	De Las Cuevas, Fabio	7:00	19:00	12:00	5.25	62.96
	0	KLFD	De Las Cuevas, Fabio	19:00	7:00	12:00	5.25	62.96
	0	KLFD-Paid Staff	Garrido, David	7:00	19:00	12:00	35.96	431.52
			Garrido, David					
	0	KLFD-Paid Staff		19:00	7:00	12:00	35.96	431.52
	0	KLFD-Paid Staff	Golling, Markus	7:00	19:00	12:00	29.52	354.24
			Golling, Markus					
	0	KLFD-Paid Staff		19:00	7:00	12:00	29.52	354.24
	0	KLFD	Gomez, Juan	7:00	19:00	12:00	5.25	62.96
	0	KLFD	Gomez, Juan	19:00	7:00	12:00	5.25	62.96
1	62.96	KLFD	Gonzalez, Andres	7:00	19:00	12:00	5.25	62.96
1	62.96	KLFD	Gonzalez, Andres	19:00	7:00	12:00	5.25	62.96
1	62.96	KLFD	Mirabella, Thomas	7:00	19:00	12:00	5.25	62.96
1	62.96	KLFD	Mirabella, Thomas	19:00	7:00	12:00	5.25	62.96
1	431.52	KLFD-Paid Staff	Mumper, Jason	7:00	19:00	12:00	35.96	431.52
1	431.52	KLFD-Paid Staff	Mumper, Jason	19:00	7:00	12:00	35.96	431.52
1	62.96	KLFD	Navarro, Luis	7:00	19:00	12:00	5.25	62.96
1	62.96	KLFD	Navarro, Luis	19:00	7:00	12:00	5.25	62.96
1	62.96	KLFD	Tucker, Curtis	7:00	19:00	12:00	5.25	62.96
1	62.96	KLFD	Tucker, Curtis	19:00	7:00	12:00	5.25	62.96
1	62.96	KLFD	Wilson, Travis	7:00	19:00	12:00	5.25	62.96
1	62.96	KLFD	Wilson, Travis	19:00	7:00	12:00	5.25	62.96

	0	KLEMS	Cid, Joseph	7:00	19:00	12:00	6.92	83.04
	0	KLEMS	Cid, Joseph	19:00	7:00	12:00	6.92	83.04
	0	KLEMS	Gonzalez, Andres	7:00	19:00	12:00	6.92	83.04
	0	KLEMS	Gonzalez, Andres	19:00	7:00	12:00	6.92	83.04
1	83.04	KLEMS	Mann, Michael	7:00	19:00	12:00	6.92	83.04
1	83.04	KLEMS	Mann, Michael	19:00	7:00	12:00	6.92	83.04
1	83.04	KLEMS	Martin, Nick	7:00	19:00	12:00	6.92	83.04
1	83.04	KLEMS	Martin, Nick	19:00	7:00	12:00	6.92	83.04
1	83.04	KLEMS	Perez, Roxanna	7:00	19:00	12:00	6.92	83.04
1	83.04	KLEMS	Perez, Roxanna	19:00	7:00	12:00	6.92	83.04
1	260.28	KLEMS-Paid Staff	Pinzon, Oscar	7:00	19:00	12:00	21.69	260.28
1	260.28	KLEMS-Paid Staff	Pinzon, Oscar	19:00	7:00	12:00	21.69	260.28

			Castro, Luis					
	0	KLEMS-Paid Staff		7:00	19:00	12:00	21.69	260.28
	0	KLEMS-Paid Staff	Charafardin, Raynier	7:00	19:00	12:00	21.69	260.28
			Charafardin, Raynier					
	0	KLEMS-Paid Staff		19:00	7:00	12:00	21.69	260.28

Date:	Name:	Time In:	Time Out:	Total Hours	Hourly Rate	Total:	Total Personnel Costs
-------	-------	----------	-----------	-------------	-------------	--------	-----------------------

189.48
This amount represents the difference between the normal hourly wage and the wages paid for D. Garrido for the 24 hour shift worked (i.e. he normally receives \$20.17 per hour, but during the emergency he was paid \$35.96 per hour)
185.76
This amount represents the difference between the normal hourly wage and the wages paid for M. Golling for the 24 hour shift worked (i.e. he normally receives \$14.04 per hour, but during the emergency he was paid \$29.52 per hour)

89.04
This amount represents the difference between the normal hourly wage and wages paid for L. Castro for the 12 hour shift worked (i.e. he normally receives \$14.27 per hour, but during the emergency he was paid \$21.69 per hour)
89.04
This amount represents the difference between the normal hourly wage and the wages paid for R. Charafardin for the 24 hour shift worked (i.e. he normally receives \$14.27 per hour, but during the emergency he was paid \$21.69 per hour)

9/9/2017								
1	431.52	KLFD-Paid Staff	Arana, Jaime	7:00	19:00	12:00	35.96	431.52
1	431.52	KLFD-Paid Staff	Arana, Jaime	19:00	7:00	12:00	35.96	431.52
	0	KLFD	De Las Cuevas, Fabio	7:00	19:00	12:00	5.25	62.96
	0	KLFD	De Las Cuevas, Fabio	19:00	7:00	12:00	5.25	62.96
	0	KLFD-Paid Staff	Garrido, David	7:00	19:00	12:00	35.96	431.52
			Garrido, David					
	0	KLFD-Paid Staff		19:00	7:00	12:00	35.96	431.52
	0	KLFD-Paid Staff	Golling, Markus	7:00	19:00	12:00	29.52	354.24
			Golling, Markus					
	0	KLFD-Paid Staff		19:00	7:00	12:00	29.52	354.24
	0	KLFD	Gomez, Juan	7:00	19:00	12:00	5.25	62.96
	0	KLFD	Gomez, Juan	19:00	7:00	12:00	5.25	62.96
1	62.96	KLFD	Izquierdo, Mario	7:00	19:00	12:00	5.25	62.96
1	62.96	KLFD	Izquierdo, Mario	19:00	7:00	12:00	5.25	62.96
1	62.96	KLFD	Mirabella, Thomas	7:00	19:00	12:00	5.25	62.96
1	62.96	KLFD	Mirabella, Thomas	19:00	7:00	12:00	5.25	62.96
1	62.96	KLFD	Mocsynzski, Paul	7:00	19:00	12:00	5.25	62.96
1	62.96	KLFD	Mocsynzski, Paul	19:00	7:00	12:00	5.25	62.96
1	62.96	KLFD	Navarro, Luis	7:00	19:00	12:00	5.25	62.96
1	62.96	KLFD	Navarro, Luis	19:00	7:00	12:00	5.25	62.96
1	62.96	KLFD	Tucker, Curtis	7:00	19:00	12:00	5.25	62.96
1	62.96	KLFD	Tucker, Curtis	19:00	7:00	12:00	5.25	62.96
1	62.96	KLFD	Wilson, Travis	7:00	19:00	12:00	5.25	62.96
1	62.96	KLFD	Wilson, Travis	19:00	7:00	12:00	5.25	62.96

1	83.04	KLEMS	Cid, Joseph	7:00	19:00	12:00	6.92	83.04
1	83.04	KLEMS	Cid, Joseph	19:00	7:00	12:00	6.92	83.04
1	83.04	KLEMS	Mann, Michael	7:00	19:00	12:00	6.92	83.04
1	83.04	KLEMS	Mann, Michael	19:00	7:00	12:00	6.92	83.04
	0	KLEMS	Martin, Nick	7:00	19:00	12:00	6.92	83.04
	0	KLEMS	Martin, Nick	19:00	7:00	12:00	6.92	83.04
	0	KLEMS	Perez, Roxanna	7:00	19:00	12:00	6.92	83.04
	0	KLEMS	Perez, Roxanna	19:00	7:00	12:00	6.92	83.04
1	260.28	KLEMS-Paid Staff	Marin, Perdo	7:00	19:00	12:00	21.69	260.28
1	260.28	KLEMS-Paid Staff	Marin, Perdo	19:00	7:00	12:00	21.69	260.28
			Castro, Luis					
	0	KLEMS-Paid Staff		7:00	19:00	12:00	21.69	260.28
	0	KLEMS-Paid Staff	Charafardin, Raynier	7:00	19:00	12:00	21.69	260.28
			Charafardin, Raynier					
	0	KLEMS-Paid Staff		19:00	7:00	12:00	21.69	260.28

189.48	This amount represents the difference between the normal hourly wage and wages paid for D. Garrido for the 24 hour shift worked (i.e. he normally receives \$20.17 per hour, but during the emergency he was paid \$35.96 per hour)
185.76	This amount represents the difference between the normal hourly wage and wages paid for M. Golling for the 24 hour shift worked (i.e. he normally receives \$14.04 per hour, but during the emergency he was paid \$29.52 per hour)

89.04	This amount represents the difference between the normal hourly wage and wages paid for L. Castro for the 12 hour shift worked (i.e. he normally receives \$14.27 per hour, but during the emergency he was paid \$21.69 per hour)
89.04	This amount represents the difference between the normal hourly wage and the wages paid for R. Charafardin for the 24 hour shift worked (i.e. he normally receives \$14.27 per hour, but during the emergency he was paid \$21.69 per hour)

Date:9/10/2017								
		Date:	Name:	Time In:	Time Out:	Total Hours	Hourly Rate	Total: Total Personnel Costs
1	431.52	KLFD-Paid Staff	Arana, Jaime	7:00	19:00	12:00	35.96	431.52
1	431.52	KLFD-Paid Staff	Arana, Jaime	19:00	7:00	12:00	35.96	431.52
	0	KLFD	De Las Cuevas, Fabio	7:00	19:00	12:00	5.25	62.96
	0	KLFD	De Las Cuevas, Fabio	19:00	7:00	12:00	5.25	62.96
	0	KLFD-Paid Staff	Garrido, David	7:00	19:00	12:00	35.96	431.52
			Garrido, David					
	0	KLFD-Paid Staff		19:00	7:00	12:00	35.96	431.52
	0	KLFD-Paid Staff	Golling, Markus	7:00	19:00	12:00	29.52	354.24
			Golling, Markus					
	0	KLFD-Paid Staff		19:00	7:00	12:00	29.52	354.24
	0	KLFD	Gomez, Juan	7:00	19:00	12:00	5.25	62.96
	0	KLFD	Gomez, Juan	19:00	7:00	12:00	5.25	62.96
1	62.96	KLFD	Gonzalez, Andres	7:00	19:00	12:00	5.25	62.96
1	62.96	KLFD	Gonzalez, Andres	19:00	7:00	12:00	5.25	62.96
1	62.96	KLFD	Izquierdo, Mario	7:00	19:00	12:00	5.25	62.96
1	62.96	KLFD	Izquierdo, Mario	19:00	7:00	12:00	5.25	62.96
1	62.96	KLFD	Mirabella, Thomas	7:00	19:00	12:00	5.25	62.96
1	62.96	KLFD	Mirabella, Thomas	19:00	7:00	12:00	5.25	62.96
1	62.96	KLFD	Mocsynzski, Paul	7:00	19:00	12:00	5.25	62.96
1	62.96	KLFD	Mocsynzski, Paul	19:00	7:00	12:00	5.25	62.96
1	431.52	KLFD-Paid Staff	Mumper, Jason	7:00	19:00	12:00	35.96	431.52
1	431.52	KLFD-Paid Staff	Mumper, Jason	19:00	7:00	12:00	35.96	431.52
1	62.96	KLFD	Navarro, Luis	7:00	19:00	12:00	5.25	62.96
1	62.96	KLFD	Navarro, Luis	19:00	7:00	12:00	5.25	62.96
1	62.96	KLFD	Tucker, Curtis	7:00	19:00	12:00	5.25	62.96
1	62.96	KLFD	Tucker, Curtis	19:00	7:00	12:00	5.25	62.96
1	62.96	KLFD	Wilson, Travis	7:00	19:00	12:00	5.25	62.96
1	62.96	KLFD	Wilson, Travis	19:00	7:00	12:00	5.25	62.96
1	83.04	KLEMS	Cid, Joseph	7:00	19:00	12:00	6.92	83.04
1	83.04	KLEMS	Cid, Joseph	19:00	7:00	12:00	6.92	83.04
1	83.04	KLEMS	Mann, Michael	7:00	19:00	12:00	6.92	83.04
1	83.04	KLEMS	Mann, Michael	19:00	7:00	12:00	6.92	83.04
	0	KLEMS	Martin, Nick	7:00	19:00	12:00	6.92	83.04
	0	KLEMS	Martin, Nick	19:00	7:00	12:00	6.92	83.04
	0	KLEMS	Perez, Roxanna	7:00	19:00	12:00	6.92	83.04
	0	KLEMS	Perez, Roxanna	19:00	7:00	12:00	6.92	83.04
1	260.28	KLEMS-Paid Staff	Marin, Perdo	7:00	19:00	12:00	21.69	260.28
1	260.28	KLEMS-Paid Staff	Marin, Perdo	19:00	7:00	12:00	21.69	260.28
			Castro, Luis					
	0	KLEMS-Paid Staff		7:00	19:00	12:00	21.69	260.28
	0	KLEMS-Paid Staff	Charafardin, Raynier	7:00	19:00	12:00	21.69	260.28

189.48
This amount represents the difference between the normal hourly wage and wages paid for D. Garrido for the 24 hour shift worked (i.e. he normally receives \$20.17 per hour, but during the emergency he was paid \$35.96 per hour)
185.76
This amount represents the difference between the normal hourly wage and wages paid for M. Golling for the 24 hour shift worked (i.e. he normally receives \$14.04 per hour, but during the emergency he was paid \$29.52 per hour)

This amount represents the difference between the normal hourly wage and wages paid for L. Castro for the 12 hour shift worked (i.e. he normally receives \$14.27 per hour, but during the emergency he was paid \$21.69 per hour)
89.04

		Charafardin, Raynier							
0		KLEMS-Paid Staff		19:00	7:00	12:00	21.69	260.28	
Date: 9/11/2017									
1	431.52	KLFD-Paid Staff	Arana, Jaime	7:00	19:00	12:00	35.96	431.52	\$8,463.27
1	511.8307	KLFD-Paid Staff	Arana, Jaime	19:00	9:14	14:14	35.96	511.83	
	0	KLFD	De Las Cuevas, Fabio	7:00	19:00	12:00	5.25	62.96	
	0	KLFD	De Las Cuevas, Fabio	19:00	7:00	12:00	5.25	62.96	
1	431.52	KLFD-Paid Staff	Garcia, Sergio Jr.	7:00	19:00	12:00	35.96	431.52	
1	431.52	KLFD-Paid Staff	Garcia, Sergio Jr.	19:00	7:00	12:00	35.96	431.52	
	0	KLFD-Paid Staff	Garrido, David	7:00	19:00	12:00	35.96	431.52	
			Garrido, David						
	0	KLFD-Paid Staff		19:00	7:00	12:00	35.96	431.52	
	0	KLFD-Paid Staff	Golling, Markus	7:00	19:00	12:00	29.52	354.24	
			Golling, Markus						
	0	KLFD-Paid Staff		19:00	7:00	12:00	29.52	354.24	
	0	KLFD	Gomez, Juan	7:00	19:00	12:00	5.25	62.96	
	0	KLFD	Gomez, Juan	19:00	7:00	12:00	5.25	62.96	
1	62.96	KLFD	Gonzalez, Andres	7:00	19:00	12:00	5.25	62.96	
1	62.96	KLFD	Gonzalez, Andres	19:00	7:00	12:00	5.25	62.96	
1	62.96	KLFD	Izquierdo, Mario	7:00	19:00	12:00	5.25	62.96	
1	62.96	KLFD	Izquierdo, Mario	19:00	7:00	12:00	5.25	62.96	
1	431.52	KLFD-Paid Staff	Jones, Chris	7:00	19:00	12:00	35.96	431.52	
1	431.52	KLFD-Paid Staff	Jones, Chris	19:00	7:00	12:00	35.96	431.52	
1	62.96	KLFD	Mirabella, Thomas	7:00	19:00	12:00	5.25	62.96	
1	62.96	KLFD	Mirabella, Thomas	19:00	7:00	12:00	5.25	62.96	
1	62.96	KLFD	Mocsynzski, Paul	7:00	19:00	12:00	5.25	62.96	
1	62.96	KLFD	Mocsynzski, Paul	19:00	7:00	12:00	5.25	62.96	
1	431.52	KLFD-Paid Staff	Mumper, Jason	7:00	19:00	12:00	35.96	431.52	
1	431.52	KLFD-Paid Staff	Mumper, Jason	19:00	7:00	12:00	35.96	431.52	
1	62.96	KLFD	Navarro, Luis	7:00	19:00	12:00	5.25	62.96	
1	62.96	KLFD	Navarro, Luis	19:00	7:00	12:00	5.25	62.96	
1	62.96	KLFD	Tucker, Curtis	7:00	19:00	12:00	5.25	62.96	
1	62.96	KLFD	Tucker, Curtis	19:00	7:00	12:00	5.25	62.96	
1	62.96	KLFD	Wilson, Travis	7:00	19:00	12:00	5.25	62.96	
1	62.96	KLFD	Wilson, Travis	19:00	7:00	12:00	5.25	62.96	
1	83.04	KLEMS	Cid, Joseph	7:00	19:00	12:00	6.92	83.04	
1	83.04	KLEMS	Cid, Joseph	19:00	7:00	12:00	6.92	83.04	
1	83.04	KLEMS	Mann, Michael	7:00	19:00	12:00	6.92	83.04	
1	83.04	KLEMS	Mann, Michael	19:00	7:00	12:00	6.92	83.04	
	0	KLEMS	Martin, Nick	7:00	19:00	12:00	6.92	83.04	
	0	KLEMS	Martin, Nick	19:00	7:00	12:00	6.92	83.04	
	0	KLEMS	Perez, Roxanna	7:00	19:00	12:00	6.92	83.04	
	0	KLEMS	Perez, Roxanna	19:00	7:00	12:00	6.92	83.04	

This amount represents the difference between the normal hourly wage and the wages paid for R. Charafardin for the 24 hour shift worked (i.e. he normally receives \$14.27 per hour, but 89.04 during the emergency he was paid \$21.69 per hour)

189.48 This amount represents the difference between the normal hourly wage and wages paid for D. Garrido for the 24 hour shift worked (i.e. he normally receives \$20.17 per hour, but during the 189.48 emergency he was paid \$35.96 per hour)

185.76 This amount represents the difference between the normal hourly wage and wages paid for M. Golling for the 24 hour shift worked (i.e. he normally receives \$14.04 per hour, but during the 185.76 emergency he was paid \$29.52 per hour)

1	260.28	KLEMS-Paid Staff	Castro, Luis	7:00	19:00	12:00	21.69	260.28	
1	260.28	KLEMS-Paid Staff	Schussheim, Adam	7:00	19:00	12:00	21.69	260.28	
1	260.28	KLEMS-Paid Staff	Schussheim, Adam	19:00	7:00	12:00	21.69	260.28	
	0	KLEMS-Paid Staff	Charafardin, Raynier	7:00	19:00	12:00	21.69	260.28	
			Charafardin, Raynier						
	0	KLEMS-Paid Staff		19:00	7:00	12:00	21.69	260.28	
			Marin, Perdo						
	0	KLEMS-Paid Staff		7:00	19:00	12:00	21.69	260.28	
Date: 9/12/2017									
			Name:	Time In:	Time Out:	Total Hours	Hourly Rate	Total:	Total Personnel Costs
			9/12/2017						
1	62.96	KLFD	Blanco, Natalia	7:00	19:00	12:00	5.25	62.96	\$8,308.44
1	62.96	KLFD	Blanco, Natalia	19:00	7:00	12:00	5.25	62.96	
1	431.52	KLFD-Paid Staff	Garcia, Fernando	7:00	19:00	12:00	35.96	431.52	
1	431.52	KLFD-Paid Staff	Garcia, Fernando	19:00	7:00	12:00	35.96	431.52	
	0	KLFD-Paid Staff	Garcia, Sergio Jr.	7:00	19:00	12:00	35.96	431.52	
			Garcia, Sergio Jr.						
	0	KLFD-Paid Staff		19:00	7:00	12:00	35.96	431.52	
1	539.4	KLFD-Paid Staff	Garrido, David	7:00	22:00	15:00	35.96	539.40	
	0	KLFD-Paid Staff	Golling, Markus	7:00	19:00	12:00	29.52	354.24	
			Golling, Markus						
	0	KLFD-Paid Staff		19:00	7:00	12:00	29.52	354.24	
	0	KLFD	Gonzalez, Andres	7:00	19:00	12:00	5.25	62.96	
	0	KLFD	Gonzalez, Andres	19:00	7:00	12:00	5.25	62.96	
1	62.96	KLFD	Izquierdo, Mario	7:00	19:00	12:00	5.25	62.96	
1	62.96	KLFD	Izquierdo, Mario	19:00	7:00	12:00	5.25	62.96	
1	431.52	KLFD-Paid Staff	Jones, Chris	7:00	19:00	12:00	35.96	431.52	
1	431.52	KLFD-Paid Staff	Jones, Chris	19:00	7:00	12:00	35.96	431.52	
1	431.52	KLFD-Paid Staff	Mumper, Jason	7:00	19:00	12:00	35.96	431.52	
1	431.52	KLFD-Paid Staff	Mumper, Jason	19:00	7:00	12:00	35.96	431.52	
1	62.96	KLFD	Mirabella, Thomas	7:00	19:00	12:00	5.25	62.96	
1	62.96	KLFD	Mirabella, Thomas	19:00	7:00	12:00	5.25	62.96	
1	62.96	KLFD	Mocsynzski, Paul	7:00	19:00	12:00	5.25	62.96	
1	62.96	KLFD	Mocsynzski, Paul	19:00	7:00	12:00	5.25	62.96	
1	62.96	KLFD	Neitzer, Eric	7:00	19:00	12:00	5.25	62.96	
1	62.96	KLFD	Neitzer, Eric	19:00	7:00	12:00	5.25	62.96	
1	62.96	KLFD	Pineda, Oswaldo	7:00	19:00	12:00	5.25	62.96	
1	62.96	KLFD	Pineda, Oswaldo	19:00	7:00	12:00	5.25	62.96	
1	62.96	KLFD	Tucker, Curtis	7:00	19:00	12:00	5.25	62.96	
1	62.96	KLFD	Tucker, Curtis	19:00	7:00	12:00	5.25	62.96	
1	62.96	KLFD	Wilson, Travis	7:00	19:00	12:00	5.25	62.96	
1	62.96	KLFD	Wilson, Travis	19:00	7:00	12:00	5.25	62.96	

89.04	This amount represents the difference between the normal hourly wage and the wages paid for R. Charafardin for the 24 hour shift worked (i.e. he normally receives \$14.27 per hour, but during the emergency he was paid \$21.69 per hour)
89.04	This amount represents the difference between the normal hourly wage and wages paid for P. Marin for the 12 hour shift worked (i.e. he normally receives \$14.27 per hour, but during the emergency he was paid \$21.69 per hour)

245.04	This amount represents the difference between the normal hourly wage and the wages paid for S. Garica for the 24 hour shift worked (i.e. he normally receives \$15.54 per hour, but during the emergency he was paid \$35.96 per hour)
--------	--

185.76	This amount represents the difference between the normal hourly wage and wages paid for M. Golling for the 24 hour shift worked (i.e. he normally receives \$14.04 per hour, but during the emergency he was paid \$29.52 per hour)
--------	---

1	83.04	KLEMS	Cid, Joseph	7:00	19:00	12:00	6.92	83.04
1	83.04	KLEMS	Cid, Joseph	19:00	7:00	12:00	6.92	83.04
1	83.04	KLEMS	Mann, Michael	7:00	19:00	12:00	6.92	83.04
1	83.04	KLEMS	Mann, Michael	19:00	7:00	12:00	6.92	83.04
1	83.04	KLEMS	Martin, Nick	7:00	19:00	12:00	6.92	83.04
1	83.04	KLEMS	Martin, Nick	19:00	7:00	12:00	6.92	83.04
	0	KLEMS	Perez, Roxanna	7:00	19:00	12:00	6.92	83.04
	0	KLEMS	Perez, Roxanna	19:00	7:00	12:00	6.92	83.04
	0	KLEMS	Gargan, Kelly	19:00	7:00	12:00	6.92	83.04
	0	KLEMS	Perrotti, John	7:00	19:00	12:00	6.92	83.04
	0	KLEMS	Perrotti, John	19:00	7:00	12:00	6.92	83.04
1	260.28	KLEMS-Paid Staff	Marin, Perdo	7:00	19:00	12:00	21.69	260.28
1	260.28	KLEMS-Paid Staff	Marin, Perdo	19:00	7:00	12:00	21.69	260.28
	0	KLEMS-Paid Staff	Charafardin, Raynier	7:00	19:00	12:00	21.69	260.28
			Charafardin, Raynier					
	0	KLEMS-Paid Staff		19:00	7:00	12:00	21.69	260.28
	0	KLEMS-Paid Staff	Schussheim, Adam	7:00	19:00	12:00	21.69	260.28
			Schussheim, Adam					
	0	KLEMS-Paid Staff		19:00	7:00	12:00	21.69	260.28

Date:	Name:	Time In:	Time Out:	Total Hours	Hourly Rate	Total:	Total Personnel Costs
9/13/2017							

1	62.96	KLFD	Alburuerque, Chris	7:00	19:00	12:00	5.25	62.96	\$7,547.12
1	62.96	KLFD	Alburuerque, Chris	19:00	7:00	12:00	5.25	62.96	
1	62.96	KLFD	Blanco, Natalia	7:00	19:00	12:00	5.25	62.96	
1	62.96	KLFD	Blanco, Natalia	19:00	7:00	12:00	5.25	62.96	
1	62.96	KLFD	Bosserman, Shelby	7:00	19:00	12:00	5.25	62.96	
1	62.96	KLFD	Bosserman, Shelby	19:00	7:00	12:00	5.25	62.96	
1	431.52	KLFD-Paid Staff	Garcia, Fernando	7:00	19:00	12:00	35.96	431.52	
1	431.52	KLFD-Paid Staff	Garcia, Fernando	19:00	7:00	12:00	35.96	431.52	
1	431.52	KLFD-Paid Staff	Garcia, Sergio Jr.	7:00	19:00	12:00	35.96	431.52	
1	431.52	KLFD-Paid Staff	Garcia, Sergio Jr.	19:00	7:00	12:00	35.96	431.52	
	0	KLFD-Paid Staff	Golling, Markus	7:00	19:00	12:00	29.52	354.24	
			Golling, Markus						
	0	KLFD-Paid Staff		19:00	7:00	12:00	29.52	354.24	
	0	KLFD	Izquierdo, Mario	7:00	19:00	12:00	5.25	62.96	
	0	KLFD	Izquierdo, Mario	19:00	7:00	12:00	5.25	62.96	
	0	KLFD-Paid Staff	Jones, Chris	7:00	19:00	12:00	35.96	431.52	
			Jones, Chris						
	0	KLFD-Paid Staff		19:00	7:00	12:00	35.96	431.52	
1	431.52	KLFD-Paid Staff	Mumper, Jason	7:00	19:00	12:00	35.96	431.52	
1	431.52	KLFD-Paid Staff	Mumper, Jason	19:00	7:00	12:00	35.96	431.52	
	0	KLFD	Mirabella, Thomas	7:00	19:00	12:00	5.25	62.96	

89.04	This amount represents the difference between the normal hourly wage and the wages paid for R. Charafardin for the 24 hour shift worked (i.e. he normally receives \$14.27 per hour, but during the emergency he was paid \$21.69 per hour)
89.04	This amount represents the difference between the normal hourly wage and the wages paid for A. Schussheim for the 24 hour shift worked (i.e. he normally receives \$14.27 per hour, but during the emergency he was paid \$21.69 per hour)

185.76	This amount represents the difference between the normal hourly wage and wages paid for M. Golling for the 24 hour shift worked (i.e. he normally receives \$14.04 per hour, but during the emergency he was paid \$29.52 per hour)
--------	---

224.64	This amount represents the difference between the normal hourly wage and wages paid for C. Jones for the 24 hour shift worked (i.e. he normally receives \$17.24 per hour, but during the emergency he was paid \$35.96 per hour)
--------	---

	0	KLFD	Mirabella, Thomas	19:00	7:00	12:00	5.25	62.96	
1	62.96	KLFD	Mocsynzski, Paul	7:00	19:00	12:00	5.25	62.96	
1	62.96	KLFD	Mocsynzski, Paul	19:00	7:00	12:00	5.25	62.96	
1	62.96	KLFD	Moreno, Leo	7:00	19:00	12:00	5.25	62.96	
1	62.96	KLFD	Moreno, Leo	19:00	7:00	12:00	5.25	62.96	
1	62.96	KLFD	Neitzer, Eric	7:00	19:00	12:00	5.25	62.96	
1	62.96	KLFD	Tucker, Curtis	7:00	19:00	12:00	5.25	62.96	
1	62.96	KLFD	Tucker, Curtis	19:00	7:00	12:00	5.25	62.96	
1	62.96	KLFD	Wilson, Travis	7:00	19:00	12:00	5.25	62.96	
1	62.96	KLFD	Wilson, Travis	19:00	7:00	12:00	5.25	62.96	
1	83.04	KLEMS	Cid, Joseph	7:00	19:00	12:00	6.92	83.04	
1	83.04	KLEMS	Cid, Joseph	19:00	7:00	12:00	6.92	83.04	
1	83.04	KLEMS	Mann, Michael	7:00	19:00	12:00	6.92	83.04	
1	83.04	KLEMS	Mann, Michael	19:00	7:00	12:00	6.92	83.04	
	0	KLEMS	Perez, Roxanna	7:00	19:00	12:00	6.92	83.04	
	0	KLEMS	Perez, Roxanna	19:00	7:00	12:00	6.92	83.04	
	0	KLEMS	Perrotti, John	7:00	19:00	12:00	6.92	83.04	
	0	KLEMS	Perrotti, John	19:00	7:00	12:00	6.92	83.04	
1	260.28	KLEMS-Paid Staff	Marin, Perdo	7:00	19:00	12:00	21.69	260.28	
1	237.72	KLEMS-Paid Staff	Fell, Ronnie	7:00	19:00	12:00	19.81	237.72	
	0	KLEMS-Paid Staff	Schussheim, Adam	7:00	19:00	12:00	21.69	260.28	
			Schussheim, Adam						
	0	KLEMS-Paid Staff		19:00	7:00	12:00	21.69	260.28	
	0	KLEMS-Paid Staff	Cruciger, Dave	7:00	19:00	12:00	21.14	253.68	
			Cruciger, Dave						
	0	KLEMS-Paid Staff		19:00	7:00	12:00	21.14	253.68	

1	83.04	KLEMS	McFadden, Michael	7:00	19:00	12:00	6.92	83.04
1	83.04	KLEMS	Nava, Jorge	19:00	7:00	12:00	6.92	83.04
1	83.04	KLEMS	Rivera, Christopher	7:00	19:00	12:00	6.92	83.04
1	83.04	KLEMS	Rivera, Christopher	19:00	7:00	12:00	6.92	83.04
	0	KLEMS	Tavai, Jesse	7:00	19:00	12:00	6.92	83.04
	0	KLEMS	Tavai, Jesse	19:00	7:00	12:00	6.92	83.04
	0	KLEMS	Perez, Roxanna	7:00	19:00	12:00	6.92	83.04
	0	KLEMS	O'Connor, Brian	19:00	7:00	12:00	6.92	83.04
1	260.28	KLEMS-Paid Staff	Marin, Perdo	7:00	19:00	12:00	21.69	260.28
1	260.28	KLEMS-Paid Staff	Marin, Perdo	19:00	7:00	12:00	21.69	260.28
1	237.72	KLEMS-Paid Staff	Fell, Ronnie	7:00	19:00	12:00	19.81	237.72
	0	KLEMS-Paid Staff	Schussheim, Adam	7:00	19:00	12:00	21.69	260.28
			Schussheim, Adam					
	0	KLEMS-Paid Staff		19:00	7:00	12:00	21.69	260.28
	0	KLEMS-Paid Staff	Hubbs, Candice	7:00	19:00	12:00	21.69	260.28
			Hubbs, Candice					
	0	KLEMS-Paid Staff		19:00	7:00	12:00	21.69	260.28

1	438.712	KLFD-Paid Staff	Arana, Jaime	6:48	19:00	12:12	35.96	438.71	\$8,724.79
1	431.52	KLFD-Paid Staff	Arana, Jaime	19:00	7:00	12:00	35.96	431.52	
	0	KLFD	Conord, Don	19:00	7:00	12:00	5.25	62.96	
	0	KLFD	De Las Cuevas, Fabio	7:00	19:00	12:00	5.25	62.96	
	0	KLFD	De Las Cuevas, Fabio	19:00	7:00	12:00	5.25	62.96	
	0	KLFD-Paid Staff	Garcia, Fernando	7:00	19:00	12:00	35.96	431.52	

This amount represents the difference between the normal hourly wage and wages paid for M. Golling for the 24 hour shift worked (i.e. he normally receives \$14.04 per hour, but during the 185.76 emergency he was paid \$29.52 per hour)

89.04	This amount represents the difference between the normal hourly wage and the wages paid for A. Schusseim for the 24 hour shift worked (i.e. he normally receives \$14.27 per hour, but during the emergency he was paid \$21.69 per hour)
89.04	This amount represents the difference between the normal hourly wage and wages paid for C. Hubbs for the 24 hour shift worked (i.e. she normally receives \$14.27 per hour, but during the emergency she was paid \$21.69 per hour)

263.04

Garcia, Fernando							
0		KLFD-Paid Staff		19:00	7:00	12:00	35.96 431.52
0		KLFD-Paid Staff	Garcia, Sergio Jr.	7:00	19:00	12:00	35.96 431.52
Garcia, Sergio Jr.							
0		KLFD-Paid Staff		19:00	7:00	12:00	35.96 431.52
1	431.52	KLFD-Paid Staff	Garrido, David	7:00	19:00	12:00	35.96 431.52
1	431.52	KLFD-Paid Staff	Garrido, David	19:00	7:00	12:00	35.96 431.52
1	354.24	KLFD-Paid Staff	Golling, Markus	7:00	19:00	12:00	29.52 354.24
1	354.24	KLFD-Paid Staff	Golling, Markus	19:00	7:00	12:00	29.52 354.24
0		KLFD	Gomez, Juan	7:00	19:00	12:00	5.25 62.96
0		KLFD	Gomez, Juan	19:00	7:00	12:00	5.25 62.96
1	431.52	KLFD-Paid Staff	Jones, Chris	7:00	19:00	12:00	35.96 431.52
1	431.52	KLFD-Paid Staff	Jones, Chris	19:00	7:00	12:00	35.96 431.52
1	62.96	KLFD	Leon, Carlos	7:00	19:00	12:00	5.25 62.96
1	62.96	KLFD	Leon, Carlos	19:00	7:00	12:00	5.25 62.96
1	62.96	KLFD	Mirabella, Thomas	7:00	19:00	12:00	5.25 62.96
1	62.96	KLFD	Mirabella, Thomas	19:00	7:00	12:00	5.25 62.96
1	62.96	KLFD	Mocsynzski, Paul	7:00	19:00	12:00	5.25 62.96
1	62.96	KLFD	Mocsynzski, Paul	19:00	7:00	12:00	5.25 62.96
1	431.52	KLFD-Paid Staff	Mumper, Jason	7:00	19:00	12:00	35.96 431.52
1	431.52	KLFD-Paid Staff	Mumper, Jason	19:00	7:00	12:00	35.96 431.52
1	62.96	KLFD	Pruna, Richy	7:00	19:00	12:00	5.25 62.96
1	62.96	KLFD	Pruna, Richy	19:00	7:00	12:00	5.25 62.96
1	62.96	KLFD	Torres, Melissa	7:00	19:00	12:00	5.25 62.96
1	62.96	KLFD	Torres, Melissa	19:00	7:00	12:00	5.25 62.96
1	62.96	KLFD	Tucker, Curtis	7:00	19:00	12:00	5.25 62.96
1	62.96	KLFD	Tucker, Curtis	19:00	7:00	12:00	5.25 62.96
1	62.96	KLFD	Wilson, Travis	7:00	19:00	12:00	5.25 62.96
1	62.96	KLFD	Wilson, Travis	19:00	7:00	12:00	5.25 62.96
1	83.04	KLEMS	Perez, Roxanna	7:00	19:00	12:00	6.92 83.04
1	83.04	KLEMS	Perez, Roxanna	19:00	7:00	12:00	6.92 83.04
1	83.04	KLEMS	Rivera, Christopher	7:00	19:00	12:00	6.92 83.04
1	83.04	KLEMS	Rivera, Christopher	19:00	7:00	12:00	6.92 83.04
0		KLEMS	Robinson, Scott	7:00	19:00	12:00	6.92 83.04
0		KLEMS	Robinson, Scott	19:00	7:00	12:00	6.92 83.04
0		KLEMS	Tavaí, Jesse	7:00	19:00	12:00	6.92 83.04
0		KLEMS	Tavaí, Jesse	19:00	7:00	12:00	6.92 83.04
0		KLEMS-Paid Staff	Schussheim, Adam	7:00	19:00	12:00	21.69 260.28
Schussheim, Adam							
0		KLEMS-Paid Staff		19:00	7:00	12:00	21.69 260.28
0		KLEMS-Paid Staff	Smith, Cecilia	7:00	19:00	12:00	18.74 224.88

263.04	This amount represents the difference between the normal hourly wage and wages paid for F. Garcia for the 24 hour shift worked (i.e. he normally receives \$14.04 per hour, but during the emergency he was paid \$35.96 per hour)
245.04	This amount represents the difference between the normal hourly wage and the wages paid for S. Garica for the 24 hour shift worked (i.e. he normally receives \$15.54 per hour, but during the emergency he was paid \$35.96 per hour)

89.04	This amount represents the difference between the normal hourly wage and the wages paid for A. Schussheim for the 24 hour shift worked (i.e. he normally receives \$14.27 per hour, but during the emergency he was paid \$21.69 per hour)
18.24	

Smith, Cecilia							
0	KLEMS-Paid Staff		19:00	7:00	12:00	18.74	224.88
Date: 9/16/2017							
		Name:	Time In:	Time Out:	Total Hours	Hourly Rate	Total: Total Personnel Costs
0	KLFD-Paid Staff	Arana, Jaime	7:00	19:00	12:00	35.96	431.52
Arana, Jaime							
0	KLFD-Paid Staff		19:00	7:00	12:00	35.96	431.52
0	KLFD	Banegas, Daniel	7:00	19:00	12:00	5.25	62.96
0	KLFD	Blind, Chris	19:00	7:00	12:00	5.25	62.96
0	KLFD	Blind, Chris	7:00	19:00	12:00	5.25	62.96
0	KLFD	Bosserman, Shelby	7:00	19:00	12:00	5.25	62.96
1	62.96	KLFD	Conord, Don	19:00	7:00	12:00	5.25
1	62.96	KLFD	De Las Cuevas, Fabio	7:00	19:00	12:00	5.25
1	62.96	KLFD	De Las Cuevas, Fabio	19:00	7:00	12:00	5.25
0	KLFD-Paid Staff	Garcia, Fernando	7:00	19:00	12:00	35.96	431.52
Garcia, Fernando							
0	KLFD-Paid Staff		19:00	7:00	12:00	35.96	431.52
1	431.52	KLFD-Paid Staff	Garcia, Sergio Jr.	7:00	19:00	12:00	35.96
1	431.52	KLFD-Paid Staff	Garcia, Sergio Jr.	19:00	7:00	12:00	35.96
1	354.24	KLFD-Paid Staff	Golling, Markus	7:00	19:00	12:00	29.52
1	354.24	KLFD-Paid Staff	Golling, Markus	19:00	7:00	12:00	29.52
1	62.96	KLFD	Gomez, Juan	7:00	19:00	12:00	5.25
1	62.96	KLFD	Gomez, Juan	19:00	7:00	12:00	5.25
1	431.52	KLFD-Paid Staff	Jones, Chris	7:00	19:00	12:00	35.96
1	431.52	KLFD-Paid Staff	Jones, Chris	19:00	7:00	12:00	35.96
1	62.96	KLFD	Leon, Carlos	7:00	19:00	12:00	5.25
1	62.96	KLFD	Leon, Carlos	19:00	7:00	12:00	5.25
1	62.96	KLFD	Mirabella, Thomas	7:00	19:00	12:00	5.25
1	62.96	KLFD	Mirabella, Thomas	19:00	7:00	12:00	5.25
1	62.96	KLFD	Mocsynzski, Paul	7:00	19:00	12:00	5.25
1	62.96	KLFD	Mocsynzski, Paul	19:00	7:00	12:00	5.25
1	62.96	KLFD	Pruna, Richy	7:00	19:00	12:00	5.25
1	62.96	KLFD	Pruna, Richy	19:00	7:00	12:00	5.25
1	62.96	KLFD	Torres, Melissa	7:00	19:00	12:00	5.25
1	62.96	KLFD	Torres, Melissa	19:00	7:00	12:00	5.25
1	62.96	KLFD	Tucker, Curtis	7:00	19:00	12:00	5.25
1	62.96	KLFD	Tucker, Curtis	19:00	7:00	12:00	5.25
1	62.96	KLFD	Wilson, Travis	7:00	19:00	12:00	5.25
1	62.96	KLFD	Wilson, Travis	19:00	7:00	12:00	5.25
1	83.04	KLEMS	Martin, Nick	7:00	19:00	12:00	6.92
1	83.04	KLEMS	Mann, Michael	19:00	7:00	12:00	6.92
1	83.04	KLEMS	Tavai, Jesse	7:00	19:00	12:00	6.92
1	83.04	KLEMS	Tavai, Jesse	19:00	7:00	12:00	6.92

This amount represents the difference between the normal hourly wage and wages paid for C. Smith for the 24 hour shift worked (i.e. she normally receives \$17.22 per hour, but during the 18.24 emergency she was paid \$18.74 per hour)

263.04

This amount represents the difference between the normal hourly wage and wages paid for J. Arana for the 24 hour shift worked (i.e. he normally receives \$14.04 per hour, but during the 263.04 emergency he was paid \$35.96 per hour)

263.04

This amount represents the difference between the normal hourly wage and wages paid for F. Garcia for the 24 hour shift worked (i.e. he normally receives \$14.04 per hour, but during the 263.04 emergency he was paid \$35.96 per hour)

	0	KLEMS	Rivera, Christopher	19:00	7:00	12:00	6.92	83.04
	0	KLEMS	Samuels, Michael	7:00	19:00	12:00	6.92	83.04
	0	KLEMS	Samuels, Michael	19:00	7:00	12:00	6.92	83.04
	0	KLEMS	Mann, Michael	7:00	19:00	12:00	6.92	83.04
1	260.28	KLEMS-Paid Staff	Marin, Perdo	7:00	19:00	12:00	21.69	260.28
	0	KLEMS-Paid Staff	Schussheim, Adam	7:00	19:00	12:00	21.69	260.28
			Schussheim, Adam					
	0	KLEMS-Paid Staff		19:00	7:00	12:00	21.69	260.28
	0	KLEMS-Paid Staff	Pinzon, Oscar	7:00	19:00	12:00	21.69	260.28
			Pinzon, Oscar					
	0	KLEMS-Paid Staff		19:00	7:00	12:00	21.69	260.28
Date: 9/17/2017								
	0	KLFD-Paid Staff	Arana, Jaime	7:00	19:00	12:00	35.96	431.52
			Arana, Jaime					
	0	KLFD-Paid Staff		19:00	7:06	12:06	35.96	435.12
	0	KLFD	Blind, Chris	19:00	7:00	12:00	5.25	62.96
	0	KLFD	Blind, Chris	7:00	19:00	12:00	5.25	62.96
	0	KLFD	Conord, Don	19:00	7:00	12:00	5.25	62.96
	0	KLFD-Paid Staff	Garcia, Fernando	7:00	19:00	12:00	35.96	431.52
			Garcia, Fernando					
	0	KLFD-Paid Staff		19:00	7:00	12:00	35.96	431.52
1	431.52	KLFD-Paid Staff	Garcia, Sergio Jr.	7:00	19:00	12:00	35.96	431.52
1	431.52	KLFD-Paid Staff	Garcia, Sergio Jr.	19:00	7:00	12:00	35.96	431.52
1	431.52	KLFD-Paid Staff	Garrido, David	7:00	19:00	12:00	35.96	431.52
1	611.32	KLFD-Paid Staff	Garrido, David	19:00	12:00	17:00	35.96	611.32
1	354.24	KLFD-Paid Staff	Golling, Markus	7:00	19:00	12:00	29.52	354.24
1	354.24	KLFD-Paid Staff	Golling, Markus	19:00	7:00	12:00	29.52	354.24
	0	KLFD	Gomez, Juan	7:00	19:00	12:00	5.25	62.96
	0	KLFD	Gomez, Juan	19:00	7:00	12:00	5.25	62.96
1	179.8	KLFD-Paid Staff	Jones, Chris	7:00	12:00	5:00	35.96	179.80
1	62.96	KLFD	Leon, Carlos	7:00	19:00	12:00	5.25	62.96
1	62.96	KLFD	Leon, Carlos	19:00	7:00	12:00	5.25	62.96
1	62.96	KLFD	Mirabella, Thomas	7:00	19:00	12:00	5.25	62.96
1	62.96	KLFD	Mirabella, Thomas	19:00	7:00	12:00	5.25	62.96
1	62.96	KLFD	Mocsynzski, Paul	7:00	19:00	12:00	5.25	62.96
1	62.96	KLFD	Mocsynzski, Paul	19:00	7:00	12:00	5.25	62.96
1	431.52	KLFD-Paid Staff	Mumper, Jason	7:00	19:00	12:00	35.96	431.52
1	431.52	KLFD-Paid Staff	Mumper, Jason	19:00	7:00	12:00	35.96	431.52
1	62.96	KLFD	Pruna, Richy	7:00	19:00	12:00	5.25	62.96
1	62.96	KLFD	Pruna, Richy	19:00	7:00	12:00	5.25	62.96
1	62.96	KLFD	Reategui, Luigi	7:00	19:00	12:00	5.25	62.96

89.04	This amount represents the difference between the normal hourly wage and the wages paid for A. Schussheim for the 24 hour shift worked (i.e. he normally receives \$14.27 per hour, but during the emergency he was paid \$21.69 per hour)
89.04	This amount represents the difference between the normal hourly wage and wages paid for O. Pinzon for the 24 hour shift worked (i.e. he normally receives \$14.27 per hour, but during the emergency he was paid \$21.69 per hour)

263.04	This amount represents the difference between the normal hourly wage and wages paid for J. Arana for the 24.06 hour shift worked (i.e. he normally receives \$14.04 per hour, but during the emergency he was paid \$35.96 per hour)
266.64	

263.04	This amount represents the difference between the normal hourly wage and wages paid for F. Garcia for the 24 hour shift worked (i.e. he normally receives \$14.04 per hour, but during the emergency he was paid \$35.96 per hour)
263.04	

1	62.96	KLFD	Tucker, Curtis	19:00	7:00	12:00	5.25	62.96	
	0	KLEMS	Cid, Joseph	7:00	19:00	12:00	6.92	83.04	
	0	KLEMS	Cid, Joseph	19:00	7:00	12:00	6.92	83.04	
	0	KLEMS	Perrotti, John	19:00	7:00	12:00	6.92	83.04	
	0	KLEMS	Gargan, Kelly	19:00	7:00	12:00	6.92	83.04	
1	260.28	KLEMS-Paid Staff	Charafardin, Raynier	7:00	19:00	12:00	21.69	260.28	
1	195.21	KLEMS-Paid Staff	Charafardin, Raynier	19:00	4:00	9:00	21.69	195.21	
			Cruciger, Dave						
	0	KLEMS-Paid Staff		7:00	19:00	12:00	21.14	253.68	
	0	KLEMS-Paid Staff	Cruciger, Dave	19:00	7:00	12:00	21.14	253.68	
	0	KLEMS-Paid Staff	Smith, Cecilia	7:00	19:00	12:00	18.74	224.88	
			Smith, Cecilia						
	0	KLEMS-Paid Staff		19:00	7:00	12:00	18.74	224.88	
Date: Name: Time In: Time Out: Total Hours Hourly Rate Total: Total Personnel Costs									
9/19/2017									
	0	KLFD	Blind, Chris	19:00	7:00	12:00	5.25	62.96	\$4,176.57
	0	KLFD	Blind, Chris	7:00	19:00	12:00	5.25	62.96	
	0	KLFD-Paid Staff	Garcia, Fernando	7:00	19:00	12:00	35.96	431.52	
			Garcia, Fernando						
	0	KLFD-Paid Staff		19:00	7:00	12:00	35.96	431.52	
	0	KLFD-Paid Staff	Garcia, Sergio Jr.	7:00	19:00	12:00	35.96	431.52	
			Garcia, Sergio Jr.						
	0	KLFD-Paid Staff		19:00	7:00	12:00	35.96	431.52	
1	485.46	KLFD-Paid Staff	Jones, Chris	5:30	19:00	13:30	35.96	485.46	
1	431.52	KLFD-Paid Staff	Jones, Chris	19:00	7:00	12:00	35.96	431.52	
	0	KLFD	Mocsynzski, Paul	7:00	19:00	12:00	5.25	62.96	
	0	KLFD	Mocsynzski, Paul	19:00	7:00	12:00	5.25	62.96	
1	62.96	KLFD	Navarro, Luis	7:00	19:00	12:00	5.25	62.96	
1	62.96	KLFD	Ozuna, Bryan	7:00	19:00	12:00	5.25	62.96	
1	62.96	KLFD	Ozuna, Bryan	19:00	7:00	12:00	5.25	62.96	
1	62.96	KLFD	Reategui, Luigi	7:00	19:00	12:00	5.25	62.96	
1	62.96	KLFD	Reategui, Luigi	19:00	7:00	12:00	5.25	62.96	
	0	KLEMS	Perrotti, John	19:00	7:00	12:00	6.92	83.04	
	0	KLEMS	Tavai, Jesse	19:00	7:00	12:00	6.92	83.04	
	0	KLEMS-Paid Staff	Fell, Ronnie	7:00	19:00	12:00	19.81	237.72	
			Fell, Ronnie						
	0	KLEMS-Paid Staff		19:00	7:00	12:00	19.81	237.72	

75.84

This amount represents the difference between the normal hourly wage and wages paid for D. Cruciger for the 24 hour shift worked (i.e. he normaly receives \$14.82 per hour, but during the emergency he was paid \$21.14 per hour)

18.24

This amount represents the difference between the normal hourly wage and wages paid for C. Smith for the 24 hour shift worked (i.e. she normaly receives \$17.22 per hour, but during the emergency she was paid \$18.74 per hour)

263.04

This amount represents the difference between the normal hourly wage and wages paid for F. Garcia for the 24 hour shift worked (i.e. he normaly receives \$14.04 per hour, but during the emergency he was paid \$35.96 per hour)

245.04

This amount represents the difference between the normal hourly wage and the wages paid for S. Garica for the 24 hour shift worked (i.e. he normaly receives \$15.54 per hour, but during the emergency he was paid \$35.96 per hour)

43.92

This amount represents the difference between the normal hourly wage and wages paid for R. Fell for the 24 hour shift worked (i.e. he normaly receives \$16.15 per hour, but during the emergency he was paid \$19.81 per hour)

		Castro, Luis							
0		KLEMS-Paid Staff		5:00	20:00	15:00	21.69	325.35	
		Date:	Name:	Time In:	Time Out:	Total Hours	Hourly Rate	Total:	Total Personnel Costs
		9/20/2017							
0		KLFD	Alburquerque, Chris	7:00	19:00	12:00	5.25	62.96	\$3,561.06
0		KLFD	Alburquerque, Chris	19:00	7:00	12:00	5.25	62.96	
0		KLFD	Bosserman, Shelby	7:00	19:00	12:00	5.25	62.96	
0		KLFD	Bosserman, Shelby	19:00	7:00	12:00	5.25	62.96	
1	62.96	KLFD	Galvin, Bradley	7:00	19:00	12:00	5.25	62.96	
1	62.96	KLFD	Galvin, Bradley	19:00	7:00	12:00	5.25	62.96	
Garcia, Fernando									
0		KLFD-Paid Staff		7:00	16:59	9:59	35.96	359.00	
0		KLFD-Paid Staff	Golling, Markus	17:02	19:00	1:58	29.52	58.06	
Golling, Markus									
0		KLFD-Paid Staff		19:00	7:00	12:00	29.52	354.24	
0		KLFD-Paid Staff	Jones, Chris	7:00	19:00	12:00	35.96	431.52	
Jones, Chris									
0		KLFD-Paid Staff		19:00	7:00	12:00	35.96	431.52	
1	62.96	KLFD	Navarro, Luis	19:00	7:00	12:00	5.25	62.96	
1	62.96	KLFD	Tucker, Curtis	7:00	19:00	12:00	5.25	62.96	
1	62.96	KLFD	Tucker, Curtis	19:00	7:00	12:00	5.25	62.96	
0		KLEMS	Oporta, Ozzie	7:00	19:00	12:00	6.92	83.04	
0		KLEMS	Oporta, Ozzie	19:00	7:00	12:00	6.92	83.04	
0		KLEMS	Tavai, Jesse	7:00	19:00	12:00	6.92	83.04	
0		KLEMS	Tavai, Jesse	19:00	7:00	12:00	6.92	83.04	
0		KLEMS-Paid Staff	Cruciger, Dave	7:00	19:00	12:00	21.14	253.68	
Cruciger, Dave									
0		KLEMS-Paid Staff		19:00	7:00	12:00	21.14	253.68	
0		KLEMS-Paid Staff	Pinzon, Oscar	7:00	19:00	12:00	21.69	260.28	
Pinzon, Oscar									
0		KLEMS-Paid Staff		19:00	7:00	12:00	21.69	260.28	

This amount represents the difference between the normal hourly wage and wages paid for L. Castro for the 15 hour shift worked (i.e. he normally receives \$14.27 per hour, but during the 111.30 emergency he was paid \$21.69 per hour)

This amount represents the difference between the normal hourly wage and wages paid for F. Garcia for the **9:59** hour shift worked (i.e. he normally receives \$14.04 per hour, but during the 224.36 emergency he was paid \$35.96 per hour)

This amount represents the difference between the normal hourly wage and wages paid for M. Golling for the **13:58** hour shift worked (i.e. he normally receives \$14.04 per hour, but during the 185.76 emergency he was paid \$29.52 per hour)

This amount represents the difference between the normal hourly wage and wages paid for C. Jones for the 24 hour shift worked (i.e. he normally receives \$17.24 per hour, but during the 224.64 emergency he was paid \$35.96 per hour)

This amount represents the difference between the normal hourly wage and the wages paid for D. Cruciger for the 24 hour shift worked (i.e. he normally receives \$14.82 per hour, but during the 75.84 emergency he was paid \$21.14 per hour)

This amount represents the difference between the normal hourly wage and the wages paid for O. Pinzon for the 24 hour shift worked (i.e. he normally receives \$14.27 per hour, but during the 89.04 emergency he was paid \$21.69 per hour)

Date:		Name:	Time In:	Time Out:	Total Hours	Hourly Rate	Total:	Total Personnel Costs
9/21/2017								
0		KLFD	Blanco, Natalia	7:00	19:00	12:00	5.25	62.96
0		KLFD	Blanco, Natalia	19:00	7:00	12:00	5.25	62.96
0		KLFD	Bohl, Andrew	19:00	7:00	12:00	5.25	62.96
0		KLFD	Conord, Don	19:00	7:00	12:00	5.25	62.96
0		KLFD-Paid Staff	Golling, Markus	7:00	19:00	12:00	29.52	354.24
			Golling, Markus					
0		KLFD-Paid Staff		19:00	7:00	12:00	29.52	354.24
0		KLFD	Gonzales, Andres	7:00	19:00	12:00	5.25	62.96
0		KLFD	Gonzales, Andres	19:00	7:00	12:00	5.25	62.96
0		KLFD-Paid Staff	Jones, Chris	7:00	19:00	12:00	35.96	431.52
			Jones, Chris					
0		KLFD-Paid Staff		19:00	7:00	12:00	35.96	431.52
1	62.96	KLFD	Mirabella, Thomas	7:00	19:00	12:00	5.25	62.96
1	62.96	KLFD	Mirabella, Thomas	19:00	7:00	12:00	5.25	62.96
1	62.96	KLFD	Tucker, Curtis	7:00	19:00	12:00	5.25	62.96
1	62.96	KLFD	Tucker, Curtis	19:00	7:00	12:00	5.25	62.96
0						0:00		
0		KLEMS	McFadden, Michael	7:00	19:00	12:00	6.92	83.04
0		KLEMS	McFadden, Michael	19:00	7:00	12:00	6.92	83.04
0		KLEMS	Oporta, Ozzie	7:00	19:00	12:00	6.92	83.04
0		KLEMS	Oporta, Ozzie	19:00	7:00	12:00	6.92	83.04
1	260.28	KLEMS-Paid Staff	Pinzon, Oscar	7:00	19:00	12:00	21.69	260.28
1	260.28	KLEMS-Paid Staff	Pinzon, Oscar	19:00	7:00	12:00	21.69	260.28
0		KLEMS-Paid Staff	Smith, Cecilia	7:00	19:00	12:00	18.74	224.88
			Smith, Cecilia					
0		KLEMS-Paid Staff		19:00	7:00	12:00	18.74	224.88
			Castro, Luis					
0		KLEMS-Paid Staff		19:00	7:00	12:00	21.69	260.28

185.76

This amount represents the difference between the normal hourly wage and the wages paid for M. Golling for the 24hour shift worked (i.e. he normaly receives \$14.04 per hour, but 185.76 during the emergency he was paid \$29.52 per hour)

224.64

This amount represents the difference between the normal hourly wage and the wages paid for C. Jones for the 24 hour shift worked (i.e. he normaly receives \$17.24 per hour, but during the 224.64 emergency he was paid \$35.96 per hour)

18.24

This amount represents the difference between the normal hourly wage and the wages paid for C. Smith for the 24 hour shift worked (i.e. she normaly receives \$17.22 per hour, but during the 18.24 emergency she was paid \$18.74 per hour)

This amount represents the difference between the normal hourly wage and the wages paid for C. Luis for the 24 hour shift worked (i.e. he normaly receives \$14.27 per hour, but during the 89.04 emergency he was paid \$21.69 per hour)

263.04

This amount represents the difference between the normal hourly wage and the wages paid for J. Arana for the 24 hour shift worked (i.e. he normaly receives \$14.04 per hour, but during the 263.04 emergency he was paid \$35.96 per hour)

	0	KLFD	Conord, Don	19:00	7:00	12:00	5.25	62.96
	0	KLFD-Paid Staff	Garcia, Sergio	7:05	19:00	11:55	35.96	428.52
			Garcia, Sergio					
	0	KLFD-Paid Staff		19:00	7:00	12:00	35.96	431.52
1	354.24	KLFD-Paid Staff	Golling, Markus	7:00	19:00	12:00	29.52	354.24
1	354.24	KLFD-Paid Staff	Golling, Markus	19:00	7:00	12:00	29.52	354.24
	0	KLFD	Gomez, Juan	7:00	19:00	12:00	5.25	62.96
	0	KLFD	Gomez, Juan	19:00	7:00	12:00	5.25	62.96
1	62.96	KLFD	Moreno, Leo	7:00	19:00	12:00	5.25	62.96
1	62.96	KLFD	Moreno, Leo	19:00	7:00	12:00	5.25	62.96

242.04	
	This amount represents the difference between the normal hourly wage and the wages paid for S. Garica for the 23:55 hour shift worked (i.e. he normally receives \$15.54 per hour, but during the emergency he was paid \$35.96 per hour)

	0	KLEMS	Cid, Joseph	7:00	19:00	12:00	6.92	83.04
	0	KLEMS	Cid, Joseph	19:00	7:00	12:00	6.92	83.04
	0	KLEMS	Gonzalez, Andres	7:00	19:00	12:00	6.92	83.04
	0	KLEMS	Gonzalez, Andres	19:00	7:00	12:00	6.92	83.04
	0	KLEMS-Paid Staff	Fell, Ronnie	7:00	19:00	12:00	19.81	237.72
			Fell, Ronnie					
	0	KLEMS-Paid Staff		19:00	7:00	12:00	19.81	237.72
	0	KLEMS-Paid Staff	Schussheim, Adam	7:00	19:00	12:00	21.69	260.28
			Schussheim, Adam					
	0	KLEMS-Paid Staff		19:00	7:00	12:00	21.69	260.28

43.92	
	This amount represents the difference between the normal hourly wage and the wages paid for R. Fell for the 24 hour shift worked (i.e. he normally receives \$16.15 per hour, but during the emergency he was paid \$19.81 per hour)
89.04	
	This amount represents the difference between the normal hourly wage and the wages paid for A. Schussheim for the 24 hour shift worked (i.e. he normally receives \$14.27 per hour, but during the emergency he was paid \$21.69 per hour)

Date: 9/23/2017								
		Name:	Time In:	Time Out:	Total Hours	Hourly Rate	Total:	Total Personnel Costs
	0	KLFD-Paid Staff	Arana, Jaime	7:00	19:00	12:00	35.96	431.52
			Arana, Jaime					
	0	KLFD-Paid Staff		19:00	7:00	12:00	35.96	431.52
	0	KLFD	Baez, Michael	7:00	19:00	12:00	5.25	62.96
	0	KLFD	Baez, Michael	19:00	7:00	12:00	5.25	62.96
	0	KLFD	Banegas, Daniel	7:00	19:00	12:00	5.25	62.96
	0	KLFD	Banegas, Daniel	19:00	7:00	12:00	5.25	62.96
	0	KLFD	Conord, Don	19:00	7:00	12:00	5.25	62.96
	0	KLFD-Paid Staff	Garcia, Sergio Jr.	7:00	19:00	12:00	35.96	431.52
			Garcia, Sergio Jr.					
	0	KLFD-Paid Staff		19:00	7:00	12:00	35.96	431.52
1	62.96	KLFD	Gomez, Juan	7:00	19:00	12:00	5.25	62.96
1	62.96	KLFD	Gonzalez, Arley	7:00	19:00	12:00	5.25	62.96
1	62.96	KLFD	Gonzalez, Arley	19:00	7:00	12:00	5.25	62.96
1	62.96	KLFD	Navarro, Luis	7:00	19:00	12:00	5.25	62.96
1	62.96	KLFD	Navarro, Luis	19:00	7:00	12:00	5.25	62.96

263.04	
	This amount represents the difference between the normal hourly wage and the wages paid for J. Arana for the 24 hour shift worked (i.e. he normally receives \$14.04 per hour, but during the emergency he was paid \$35.96 per hour)

245.04	
	This amount represents the difference between the normal hourly wage and the wages paid for S. Garica for the 24 hour shift worked (i.e. he normally receives \$15.54 per hour, but during the emergency he was paid \$35.96 per hour)

0	KLEMS	Gonzalez, Andres	7:00	19:00	12:00	6.92	83.04
0	KLEMS	Gonzalez, Andres	19:00	7:00	12:00	6.92	83.04
0	KLEMS	Rivera, Christopher	7:00	19:00	12:00	6.92	83.04
0	KLEMS	Rivera, Christopher	19:00	7:00	12:00	6.92	83.04
0	KLEMS-Paid Staff	Schussheim, Adam	7:00	19:00	12:00	21.69	260.28
		Schussheim, Adam					
0	KLEMS-Paid Staff		19:00	7:00	12:00	21.69	260.28
0	KLEMS-Paid Staff	Charafardin, Raynier	7:00	19:00	12:00	21.69	260.28
		Charafardin, Raynier					
0	KLEMS-Paid Staff		19:00	7:00	12:00	21.69	260.28

89.04
This amount represents the difference between the normal hourly wage and the wages paid for A. Schussheim for the 24 hour shift worked (i.e. he normally receives \$14.27 per hour, but during the emergency he was paid \$21.69 per hour)
89.04
89.04
This amount represents the difference between the normal hourly wage and the wages paid for R. Charafardin for the 24 hour shift worked (i.e. he normally receives \$14.27 per hour, but during the emergency he was paid \$21.69 per hour)
89.04

<u>Full Time FF</u>	<u>Totals From</u>			<u>payroll taxes on totals</u>
<u>Reimbursement</u>	<u>Above</u>	<u>Supporting Docs</u>	<u>diff</u>	<u>from above</u>
#1 9/7-9/10		\$ 8,321.28		\$ 636.58
#2 9/11-9/24		\$ 47,091.24		\$ 3,602.48
#3 Mumper correction		\$ 1,726.08		\$ 132.05
#4 Golling correction		\$ 708.48		\$ 54.20
	57,845.43	\$ 57,847.08	\$ (1.65)	\$ 4,425.30

							Volunteer Shift Count from Report
KLVAC volunteers	9,217.44	\$	15,226.80	\$	(6,009.36)	\$ 705.13	is reimbursement from 9/1-9/30 9217.44
KLVFD volunteers	15,614.08	\$	22,197.89	\$	(6,583.81)	\$ 1,194.48	is reimbursement from 9/1-9/30 22,197.89
KLVAC paid staff	\$ 21,129.12	\$	-	\$	21,129.12	\$ 1,616.38	amount has not been reimbursed to the dept yet

KLFR&EMS District							Validation Lookup Equip.	Validation Lookup Equip. Cost	Validation Test Equip Cost	Validation Test Hrs
				553.28						
September 7, 2017				0.00	0.00					228.00
Equipment/Supplies	FEMA Cost Code	Units	Cost/Hr	Total Hrs	Total	Total Cost				TRUE
						\$21,572.13				
Squad 24	8692	1	\$78.90	0.00	\$0.00	\$0.00	Truck, Fire	78.90	TRUE	
Tanker 24	8690	1	\$68.00	0.00	\$0.00		Truck, Fire	68.00	TRUE	
Air Truck 24 (Rescue)	8696	1	\$93.47	0.00	\$0.00		Truck, Fire	93.47	TRUE	
Water Rescue 24 (Command)	8696	1	\$93.47	0.00	\$0.00		Truck, Fire	93.47	TRUE	
Ladder/Quint 25	8694	1	\$117.10	0.00	\$0.00		Truck, Fire Ladder	117.10	TRUE	
Engine 25	8692	1	\$78.90	0.00	\$0.00		Truck, Fire	78.90	TRUE	
Chain Saw 20"	8189	1	\$2.65	0.00	\$0.00		Chainsaw	2.65	TRUE	
Chain Saw 20"	8189	1	\$2.65	0.00	\$0.00		Chainsaw	2.65	TRUE	
Chain Saw 20"	8189	1	\$2.65	0.00	\$0.00		Chainsaw	2.65	TRUE	
Chain Saw 25"	8191	1	\$3.45	0.00	\$0.00		Chain Saw	3.45	TRUE	
Chain Saw 25"	8191	1	\$3.45	0.00	\$0.00		Chain Saw	3.45	TRUE	
Station 24 Generator	8313	1	\$34.95	0.00	\$0.00		Generator	34.95	TRUE	
Station 25 Generator	8314	1	\$50.00	0.00	\$0.00		Generator	50.00	TRUE	
Rescue 23 (Ambulance)	8041	1	\$40.50	0.00	\$0.00		Ambulance	40.50	TRUE	
Rescue 123 (Ambulance)	8041	1	\$40.50	0.00	\$0.00		Ambulance	40.50	TRUE	
September 8, 2017				1.88	108.92					456.00
Equipment/Supplies		Units	Cost/Hr	Total Hrs	Total	Total Cost				TRUE
Squad 24	8692	1	\$78.90	0.17	\$13.15	\$108.92	Truck, Fire	78.90	TRUE	
Tanker 24	8690	1	\$68.00	0.00	\$0.00		Truck, Fire	68.00	TRUE	
Air Truck 24 (Rescue)	8696	1	\$93.47	0.00	\$0.00		Truck, Fire	93.47	TRUE	
Water Rescue 24 (Command)	8696	1	\$93.47	0.00	\$0.00		Truck, Fire	93.47	TRUE	
Ladder/Quint 25	8694	1	\$117.10	0.00	\$0.00		Truck, Fire Ladder	117.10	TRUE	
Engine 25	8692	1	\$78.90	0.17	\$13.15		Truck, Fire	78.90	TRUE	
Engine 24	8692	1	\$78.90	0.52	\$40.77		Truck, Fire	78.90	TRUE	
Chain Saw 20"	8189	1	\$2.65	0.00	\$0.00		Chainsaw	2.65	TRUE	
Chain Saw 20"	8189	1	\$2.65	0.00	\$0.00		Chainsaw	2.65	TRUE	
Chain Saw 20"	8189	1	\$2.65	0.00	\$0.00		Chainsaw	2.65	TRUE	
Chain Saw 25"	8191	1	\$3.45	0.00	\$0.00		Chain Saw	3.45	TRUE	
Chain Saw 25"	8191	1	\$3.45	0.00	\$0.00		Chain Saw	3.45	TRUE	
Station 24 Generator	8313	1	\$34.95	0.00	\$0.00		Generator	34.95	TRUE	
Station 25 Generator	8314	1	\$50.00	0.00	\$0.00		Generator	50.00	TRUE	
Rescue 23 (Ambulance)	8041	1	\$40.50	1.03	\$41.85		Ambulance	40.50	TRUE	
Rescue 123 (Ambulance)	8041	1	\$40.50	0.00	\$0.00		Ambulance	40.50	TRUE	

September 9, 2017				8.97	707.47					420.00
Equipment/Supplies		Units	Cost/Hr	Total Hrs	Total	Total Cost				TRUE
Squad 24	8692	1	\$78.90	4.48	\$353.74	\$707.47	Truck, Fire	78.90	TRUE	
Tanker 24	8690	1	\$68.00	0.00	\$0.00		Truck, Fire	68.00	TRUE	
Air Truck 24 (Rescue)	8696	1	\$93.47	0.00	\$0.00		Truck, Fire	93.47	TRUE	
Water Rescue 24 (Command)	8696	1	\$93.47	0.00	\$0.00		Truck, Fire	93.47	TRUE	
Ladder/Quint 25	8694	1	\$117.10	0.00	\$0.00		Truck, Fire Ladder	117.10	TRUE	
Engine 25	8692	1	\$78.90	4.48	\$353.74		Truck, Fire	78.90	TRUE	
Chain Saw 20"	8189	1	\$2.65	0.00	\$0.00		Chainsaw	2.65	TRUE	
Chain Saw 20"	8189	1	\$2.65	0.00	\$0.00		Chainsaw	2.65	TRUE	
Chain Saw 20"	8189	1	\$2.65	0.00	\$0.00		Chainsaw	2.65	TRUE	
Chain Saw 25"	8191	1	\$3.45	0.00	\$0.00		Chain Saw	3.45	TRUE	
Chain Saw 25"	8191	1	\$3.45	0.00	\$0.00		Chain Saw	3.45	TRUE	
Station 24 Generator	8313	1	\$34.95	0.00	\$0.00		Generator	34.95	TRUE	
Station 25 Generator	8314	1	\$50.00	0.00	\$0.00		Generator	50.00	TRUE	
Rescue 23 (Ambulance)	8041	1	\$40.50	0.00	\$0.00		Ambulance	40.50	TRUE	
Rescue 123 (Ambulance)	8041	1	\$40.50	0.00	\$0.00		Ambulance	40.50	TRUE	
September 10, 2017				53.00	3306.15					468.00
Equipment/Supplies		Units	Cost/Hr	Total Hrs	Total	Total Cost				TRUE
Squad 24	8692	1	\$78.90	0.00	\$0.00	\$3,306.15	Truck, Fire	78.90	TRUE	
Tanker 24	8690	1	\$68.00	0.00	\$0.00		Truck, Fire	68.00	TRUE	
Air Truck 24 (Rescue)	8696	1	\$93.47	0.00	\$0.00		Truck, Fire	93.47	TRUE	
Water Rescue 24 (Command)	8696	1	\$93.47	0.00	\$0.00		Truck, Fire	93.47	TRUE	
Ladder/Quint 25	8694	1	\$117.10	9.50	\$1,112.45		Truck, Fire Ladder	117.10	TRUE	
Engine 25	8692	1	\$78.90	9.50	\$749.55		Truck, Fire	78.90	TRUE	
Chain Saw 20"	8189	1	\$2.65	0.00	\$0.00		Chainsaw	2.65	TRUE	
Chain Saw 20"	8189	1	\$2.65	0.00	\$0.00		Chainsaw	2.65	TRUE	
Chain Saw 20"	8189	1	\$2.65	0.00	\$0.00		Chainsaw	2.65	TRUE	
Chain Saw 25"	8191	1	\$3.45	0.00	\$0.00		Chain Saw	3.45	TRUE	
Chain Saw 25"	8191	1	\$3.45	0.00	\$0.00		Chain Saw	3.45	TRUE	
Station 24 Generator	8313	1	\$34.95	17.00	\$594.15		Generator	34.95	TRUE	
Station 25 Generator	8314	1	\$50.00	17.00	\$850.00		Generator	50.00	TRUE	
Rescue 23 (Ambulance)	8041	1	\$40.50	0.00	\$0.00		Ambulance	40.50	TRUE	
Rescue 123 (Ambulance)	8041	1	\$40.50	0.00	\$0.00		Ambulance	40.50	TRUE	

September 11, 2017				77.65	3046.41					530.23
Equipment/Supplies		Units	Cost/Hr	Total Hrs	Total	Total Cost				TRUE
Squad 24	8692	1	\$78.90	3.23	\$255.11	\$3,046.41	Truck, Fire	78.90	TRUE	
Tanker 24	8690	1	\$68.00	0.00	\$0.00		Truck, Fire	68.00	TRUE	
Air Truck 24 (Rescue)	8696	1	\$93.47	2.47	\$230.56		Truck, Fire	93.47	TRUE	
Water Rescue 24 (Command)	8696	1	\$93.47	0.00	\$0.00		Truck, Fire	93.47	TRUE	
Ladder/Quint 25	8694	1	\$117.10	3.95	\$462.55		Truck, Fire Ladder	117.10	TRUE	
Engine 25	8692	1	\$78.90	0.00	\$0.00		Truck, Fire	78.90	TRUE	
Chain Saw 20"	8189	1	\$2.65	4.00	\$10.60		Chainsaw	2.65	TRUE	
Chain Saw 20"	8189	1	\$2.65	4.00	\$10.60		Chainsaw	2.65	TRUE	
Chain Saw 20"	8189	1	\$2.65	4.00	\$10.60		Chainsaw	2.65	TRUE	
Chain Saw 25"	8191	1	\$3.45	4.00	\$13.80		Chain Saw	3.45	TRUE	
Chain Saw 25"	8191	1	\$3.45	4.00	\$13.80		Chain Saw	3.45	TRUE	
Station 24 Generator	8313	1	\$34.95	24.00	\$838.80		Generator	34.95	TRUE	
Station 25 Generator	8314	1	\$50.00	24.00	\$1,200.00		Generator	50.00	TRUE	
Rescue 23 (Ambulance)	8041	1	\$40.50	0.00	\$0.00		Ambulance	40.50	TRUE	
Rescue 123 (Ambulance)	8041	1	\$40.50	0.00	\$0.00		Ambulance	40.50	TRUE	
September 12, 2017				94.45	4273.14					555.00
Equipment/Supplies		Units	Cost/Hr	Total Hrs	Total	Total Cost				TRUE
Squad 24	8692	1	\$78.90	5.65	\$445.79	\$4,273.14	Truck, Fire	78.90	TRUE	
Tanker 24	8690	1	\$68.00	5.65	\$384.20		Truck, Fire	68.00	TRUE	
Air Truck 24 (Rescue)	8696	1	\$93.47	0.00	\$0.00		Truck, Fire	93.47	TRUE	
Water Rescue 24 (Command)	8696	1	\$93.47	0.00	\$0.00		Truck, Fire	93.47	TRUE	
Ladder/Quint 25	8694	1	\$117.10	3.92	\$458.64		Truck, Fire Ladder	117.10	TRUE	
Engine 25	8692	1	\$78.90	11.23	\$886.31		Truck, Fire	78.90	TRUE	
Chain Saw 20"	8189	1	\$2.65	4.00	\$10.60		Chainsaw	2.65	TRUE	
Chain Saw 20"	8189	1	\$2.65	4.00	\$10.60		Chainsaw	2.65	TRUE	
Chain Saw 20"	8189	1	\$2.65	4.00	\$10.60		Chainsaw	2.65	TRUE	
Chain Saw 25"	8191	1	\$3.45	4.00	\$13.80		Chain Saw	3.45	TRUE	
Chain Saw 25"	8191	1	\$3.45	4.00	\$13.80		Chain Saw	3.45	TRUE	
Station 24 Generator	8313	1	\$34.95	24.00	\$838.80		Generator	34.95	TRUE	
Station 25 Generator	8314	1	\$50.00	24.00	\$1,200.00		Generator	50.00	TRUE	
Rescue 23 (Ambulance)	8041	1	\$40.50	0.00	\$0.00		Ambulance	40.50	TRUE	
Rescue 123 (Ambulance)	8041	1	\$40.50	0.00	\$0.00		Ambulance	40.50	TRUE	

September 13, 2017				94.17	4630.07					516.00
Equipment/Supplies		Units	Cost/Hr	Total Hrs	Total	Total Cost				TRUE
Squad 24	8692	1	\$78.90	4.07	\$320.86	\$4,630.07	Truck, Fire	78.90	TRUE	
Tanker 24	8690	1	\$68.00	0.23	\$15.87		Truck, Fire	68.00	TRUE	
Air Truck 24 (Rescue)	8696	1	\$93.47	0.00	\$0.00		Truck, Fire	93.47	TRUE	
Water Rescue 24 (Command)	8696	1	\$93.47	0.00	\$0.00		Truck, Fire	93.47	TRUE	
Ladder/Quint 25	8694	1	\$117.10	12.30	\$1,440.33		Truck, Fire Ladder	117.10	TRUE	
Engine 25	8692	1	\$78.90	9.57	\$754.81		Truck, Fire	78.90	TRUE	
Chain Saw 20"	8189	1	\$2.65	4.00	\$10.60		Chainsaw	2.65	TRUE	
Chain Saw 20"	8189	1	\$2.65	4.00	\$10.60		Chainsaw	2.65	TRUE	
Chain Saw 20"	8189	1	\$2.65	4.00	\$10.60		Chainsaw	2.65	TRUE	
Chain Saw 25"	8191	1	\$3.45	4.00	\$13.80		Chain Saw	3.45	TRUE	
Chain Saw 25"	8191	1	\$3.45	4.00	\$13.80		Chain Saw	3.45	TRUE	
Station 24 Generator	8313	1	\$34.95	24.00	\$838.80		Generator	34.95	TRUE	
Station 25 Generator	8314	1	\$50.00	24.00	\$1,200.00		Generator	50.00	TRUE	
Rescue 23 (Ambulance)	8041	1	\$40.50	0.00	\$0.00		Ambulance	40.50	TRUE	
Rescue 123 (Ambulance)	8041	1	\$40.50	0.00	\$0.00		Ambulance	40.50	TRUE	
September 14, 2017				50.50	1680.54					542.00
Equipment/Supplies		Units	Cost/Hr	Total Hrs	Total	Total Cost				TRUE
Squad 24	8692	1	\$78.90	2.97	\$234.07	\$1,680.54	Truck, Fire	78.90	TRUE	
Tanker 24	8690	1	\$68.00	0.00	\$0.00		Truck, Fire	68.00	TRUE	
Air Truck 24 (Rescue)	8696	1	\$93.47	1.10	\$102.82		Truck, Fire	93.47	TRUE	
Water Rescue 24 (Command)	8696	1	\$93.47	0.85	\$79.45		Truck, Fire	93.47	TRUE	
Ladder/Quint 25	8694	1	\$117.10	1.58	\$185.41		Truck, Fire Ladder	117.10	TRUE	
Engine 25	8692	1	\$78.90	0.00	\$0.00		Truck, Fire	78.90	TRUE	
Chain Saw 20"	8189	1	\$2.65	4.00	\$10.60		Chainsaw	2.65	TRUE	
Chain Saw 20"	8189	1	\$2.65	4.00	\$10.60		Chainsaw	2.65	TRUE	
Chain Saw 20"	8189	1	\$2.65	4.00	\$10.60		Chainsaw	2.65	TRUE	
Chain Saw 25"	8191	1	\$3.45	4.00	\$13.80		Chain Saw	3.45	TRUE	
Chain Saw 25"	8191	1	\$3.45	4.00	\$13.80		Chain Saw	3.45	TRUE	
Station 24 Generator	8313	1	\$34.95	12.00	\$419.40		Generator	34.95	TRUE	
Station 25 Generator	8314	1	\$50.00	12.00	\$600.00		Generator	50.00	TRUE	
Rescue 23 (Ambulance)	8041	1	\$40.50	0.00	\$0.00		Ambulance	40.50	TRUE	
Rescue 123 (Ambulance)	8041	1	\$40.50	0.00	\$0.00		Ambulance	40.50	TRUE	

September 15, 2017				37.10	1213.46					540.20
Equipment/Supplies		Units	Cost/Hr	Total Hrs	Total	Total Cost				TRUE
Squad 24	8692	1	\$78.90	1.13	\$89.42	\$1,213.46	Truck, Fire	78.90	TRUE	
Tanker 24	8690	1	\$68.00	0.00	\$0.00		Truck, Fire	68.00	TRUE	
Air Truck 24 (Rescue)	8696	1	\$93.47	0.00	\$0.00		Truck, Fire	93.47	TRUE	
Water Rescue 24 (Command)	8696	1	\$93.47	1.57	\$146.44		Truck, Fire	93.47	TRUE	
Ladder/Quint 25	8694	1	\$117.10	1.57	\$183.46		Truck, Fire Ladder	117.10	TRUE	
Engine 25	8692	1	\$78.90	0.83	\$65.75		Truck, Fire	78.90	TRUE	
Chain Saw 20"	8189	1	\$2.65	0.00	\$0.00		Chainsaw	2.65	TRUE	
Chain Saw 20"	8189	1	\$2.65	4.00	\$10.60		Chainsaw	2.65	TRUE	
Chain Saw 20"	8189	1	\$2.65	4.00	\$10.60		Chainsaw	2.65	TRUE	
Chain Saw 25"	8191	1	\$3.45	4.00	\$13.80		Chain Saw	3.45	TRUE	
Chain Saw 25"	8191	1	\$3.45	4.00	\$13.80		Chain Saw	3.45	TRUE	
Station 24 Generator	8313	1	\$34.95	8.00	\$279.60		Generator	34.95	TRUE	
Station 25 Generator	8314	1	\$50.00	8.00	\$400.00		Generator	50.00	TRUE	
Rescue 23 (Ambulance)	8041	1	\$40.50	0.00	\$0.00		Ambulance	40.50	TRUE	
Rescue 123 (Ambulance)	8041	1	\$40.50	0.00	\$0.00		Ambulance	40.50	TRUE	
September 16, 2017				25.17	492.91					552.00
Equipment/Supplies		Units	Cost/Hr	Total Hrs	Total	Total Cost				TRUE
Squad 24	8692	1	\$78.90	1.00	\$78.90	\$492.91	Truck, Fire	78.90	TRUE	
Tanker 24	8690	1	\$68.00	0.77	\$52.13		Truck, Fire	68.00	TRUE	
Air Truck 24 (Rescue)	8696	1	\$93.47	0.23	\$21.81		Truck, Fire	93.47	TRUE	
Water Rescue 24 (Command)	8696	1	\$93.47	1.25	\$116.84		Truck, Fire	93.47	TRUE	
Ladder/Quint 25	8694	1	\$117.10	1.00	\$117.10		Truck, Fire Ladder	117.10	TRUE	
Engine 25	8692	1	\$78.90	0.25	\$19.73		Truck, Fire	78.90	TRUE	
Chain Saw 20"	8189	1	\$2.65	4.00	\$10.60		Chainsaw	2.65	TRUE	
Chain Saw 20"	8189	1	\$2.65	4.00	\$10.60		Chainsaw	2.65	TRUE	
Chain Saw 20"	8189	1	\$2.65	4.00	\$10.60		Chainsaw	2.65	TRUE	
Chain Saw 25"	8191	1	\$3.45	4.00	\$13.80		Chain Saw	3.45	TRUE	
Chain Saw 25"	8191	1	\$3.45	4.00	\$13.80		Chain Saw	3.45	TRUE	
Station 24 Generator	8313	1	\$34.95	0.00	\$0.00		Generator	34.95	TRUE	
Station 25 Generator	8314	1	\$50.00	0.00	\$0.00		Generator	50.00	TRUE	
Rescue 23 (Ambulance)	8041	1	\$40.50	0.67	\$27.00		Ambulance	40.50	TRUE	
Rescue 123 (Ambulance)	8041	1	\$40.50	0.00	\$0.00		Ambulance	40.50	TRUE	

September 17, 2017				22.52	280.53					522.10
Equipment/Supplies		Units	Cost/Hr	Total Hrs	Total	Total Cost				TRUE
Squad 24	8692	1	\$78.90	1.13	\$89.42	\$280.53	Truck, Fire	78.90	TRUE	
Tanker 24	8690	1	\$68.00	0.62	\$41.93		Truck, Fire	68.00	TRUE	
Air Truck 24 (Rescue)	8696	1	\$93.47	0.00	\$0.00		Truck, Fire	93.47	TRUE	
Water Rescue 24 (Command)	8696	1	\$93.47	0.00	\$0.00		Truck, Fire	93.47	TRUE	
Ladder/Quint 25	8694	1	\$117.10	0.77	\$89.78		Truck, Fire Ladder	117.10	TRUE	
Engine 25	8692	1	\$78.90	0.00	\$0.00		Truck, Fire	78.90	TRUE	
Chain Saw 20"	8189	1	\$2.65	4.00	\$10.60		Chainsaw	2.65	TRUE	
Chain Saw 20"	8189	1	\$2.65	4.00	\$10.60		Chainsaw	2.65	TRUE	
Chain Saw 20"	8189	1	\$2.65	4.00	\$10.60		Chainsaw	2.65	TRUE	
Chain Saw 25"	8191	1	\$3.45	4.00	\$13.80		Chain Saw	3.45	TRUE	
Chain Saw 25"	8191	1	\$3.45	4.00	\$13.80		Chain Saw	3.45	TRUE	
Station 24 Generator	8313	1	\$34.95	0.00	\$0.00		Generator	34.95	TRUE	
Station 25 Generator	8314	1	\$50.00	0.00	\$0.00		Generator	50.00	TRUE	
Rescue 23 (Ambulance)	8041	1	\$40.50	0.00	\$0.00		Ambulance	40.50	TRUE	
Rescue 123 (Ambulance)	8041	1	\$40.50	0.00	\$0.00		Ambulance	40.50	TRUE	
September 18, 2017				13.15	278.24					344.78
Equipment/Supplies		Units	Cost/Hr	Total Hrs	Total	Total Cost				TRUE
Squad 24	8692	1	\$78.90	1.42	\$111.78	\$278.24	Truck, Fire	78.90	TRUE	
Tanker 24	8690	1	\$68.00	0.00	\$0.00		Truck, Fire	68.00	TRUE	
Air Truck 24 (Rescue)	8696	1	\$93.47	0.00	\$0.00		Truck, Fire	93.47	TRUE	
Water Rescue 24 (Command)	8696	1	\$93.47	0.00	\$0.00		Truck, Fire	93.47	TRUE	
Ladder/Quint 25	8694	1	\$117.10	0.00	\$0.00		Truck, Fire Ladder	117.10	TRUE	
Engine 25	8692	1	\$78.90	1.73	\$136.76		Truck, Fire	78.90	TRUE	
Chain Saw 20"	8189	1	\$2.65	2.00	\$5.30		Chainsaw	2.65	TRUE	
Chain Saw 20"	8189	1	\$2.65	2.00	\$5.30		Chainsaw	2.65	TRUE	
Chain Saw 20"	8189	1	\$2.65	2.00	\$5.30		Chainsaw	2.65	TRUE	
Chain Saw 25"	8191	1	\$3.45	2.00	\$6.90		Chain Saw	3.45	TRUE	
Chain Saw 25"	8191	1	\$3.45	2.00	\$6.90		Chain Saw	3.45	TRUE	
Station 24 Generator	8313	1	\$34.95	0.00	\$0.00		Generator	34.95	TRUE	
Station 25 Generator	8314	1	\$50.00	0.00	\$0.00		Generator	50.00	TRUE	
Rescue 23 (Ambulance)	8041	1	\$40.50	0.00	\$0.00		Ambulance	40.50	TRUE	
Rescue 123 (Ambulance)	8041	1	\$40.50	0.00	\$0.00		Ambulance	40.50	TRUE	

September 19, 2017				13.22	223.93					244.50
Equipment/Supplies		Units	Cost/Hr	Total Hrs	Total	Total Cost				TRUE
Squad 24	8692	1	\$78.90	1.23	\$97.31	\$223.93	Truck, Fire	78.90	TRUE	
Tanker 24	8690	1	\$68.00	0.00	\$0.00		Truck, Fire	68.00	TRUE	
Air Truck 24 (Rescue)	8696	1	\$93.47	0.00	\$0.00		Truck, Fire	93.47	TRUE	
Water Rescue 24 (Command)	8696	1	\$93.47	0.00	\$0.00		Truck, Fire	93.47	TRUE	
Ladder/Quint 25	8694	1	\$117.10	0.22	\$25.37		Truck, Fire Ladder	117.10	TRUE	
Engine 25	8692	1	\$78.90	0.00	\$0.00		Truck, Fire	78.90	TRUE	
Chain Saw 20"	8189	1	\$2.65	2.00	\$5.30		Chainsaw	2.65	TRUE	
Chain Saw 20"	8189	1	\$2.65	2.00	\$5.30		Chainsaw	2.65	TRUE	
Chain Saw 20"	8189	1	\$2.65	2.00	\$5.30		Chainsaw	2.65	TRUE	
Chain Saw 25"	8191	1	\$3.45	2.00	\$6.90		Chain Saw	3.45	TRUE	
Chain Saw 25"	8191	1	\$3.45	2.00	\$6.90		Chain Saw	3.45	TRUE	
Station 24 Generator	8313	1	\$34.95	0.00	\$0.00		Generator	34.95	TRUE	
Station 25 Generator	8314	1	\$50.00	0.00	\$0.00		Generator	50.00	TRUE	
Rescue 23 (Ambulance)	8041	1	\$40.50	1.77	\$71.55		Ambulance	40.50	TRUE	
Rescue 123 (Ambulance)	8041	1	\$40.50	0.00	\$0.00		Ambulance	40.50	TRUE	
September 20, 2017				16.45	399.39					251.95
Equipment/Supplies		Units	Cost/Hr	Total Hrs	Total	Total Cost				TRUE
Squad 24	8692	1	\$78.90	0.88	\$69.70	\$399.39	Truck, Fire	78.90	TRUE	
Tanker 24	8690	1	\$68.00	0.38	\$26.07		Truck, Fire	68.00	TRUE	
Air Truck 24 (Rescue)	8696	1	\$93.47	0.00	\$0.00		Truck, Fire	93.47	TRUE	
Water Rescue 24 (Command)	8696	1	\$93.47	0.00	\$0.00		Truck, Fire	93.47	TRUE	
Ladder/Quint 25	8694	1	\$117.10	0.00	\$0.00		Truck, Fire Ladder	117.10	TRUE	
Engine 25	8692	1	\$78.90	1.67	\$131.50		Truck, Fire	78.90	TRUE	
Chain Saw 20"	8189	1	\$2.65	2.00	\$5.30		Chainsaw	2.65	TRUE	
Chain Saw 20"	8189	1	\$2.65	2.00	\$5.30		Chainsaw	2.65	TRUE	
Chain Saw 20"	8189	1	\$2.65	2.00	\$5.30		Chainsaw	2.65	TRUE	
Chain Saw 25"	8191	1	\$3.45	2.00	\$6.90		Chain Saw	3.45	TRUE	
Chain Saw 25"	8191	1	\$3.45	2.00	\$6.90		Chain Saw	3.45	TRUE	
Station 24 Generator	8313	1	\$34.95	0.00	\$0.00		Generator	34.95	TRUE	
Station 25 Generator	8314	1	\$50.00	0.00	\$0.00		Generator	50.00	TRUE	
Rescue 23 (Ambulance)	8041	1	\$40.50	3.52	\$142.43		Ambulance	40.50	TRUE	
Rescue 123 (Ambulance)	8041	1	\$40.50	0.00	\$0.00		Ambulance	40.50	TRUE	

September 21, 2017				17.62	475.78					276.00
Equipment/Supplies		Units	Cost/Hr	Total Hrs	Total	Total Cost				TRUE
Squad 24	8692	1	\$78.90	2.25	\$177.53	\$475.78	Truck, Fire	78.90	TRUE	
Tanker 24	8690	1	\$68.00	0.00	\$0.00		Truck, Fire	68.00	TRUE	
Air Truck 24 (Rescue)	8696	1	\$93.47	0.00	\$0.00		Truck, Fire	93.47	TRUE	
Water Rescue 24 (Command)	8696	1	\$93.47	0.00	\$0.00		Truck, Fire	93.47	TRUE	
Ladder/Quint 25	8694	1	\$117.10	0.00	\$0.00		Truck, Fire Ladder	117.10	TRUE	
Engine 25	8692	1	\$78.90	1.33	\$105.20		Truck, Fire	78.90	TRUE	
Chain Saw 20"	8189	1	\$2.65	2.00	\$5.30		Chainsaw	2.65	TRUE	
Chain Saw 20"	8189	1	\$2.65	2.00	\$5.30		Chainsaw	2.65	TRUE	
Chain Saw 20"	8189	1	\$2.65	2.00	\$5.30		Chainsaw	2.65	TRUE	
Chain Saw 25"	8191	1	\$3.45	2.00	\$6.90		Chain Saw	3.45	TRUE	
Chain Saw 25"	8191	1	\$3.45	2.00	\$6.90		Chain Saw	3.45	TRUE	
Station 24 Generator	8313	1	\$34.95	0.00	\$0.00		Generator	34.95	TRUE	
Station 25 Generator	8314	1	\$50.00	0.00	\$0.00		Generator	50.00	TRUE	
Rescue 23 (Ambulance)	8041	1	\$40.50	4.03	\$163.35		Ambulance	40.50	TRUE	
Rescue 123 (Ambulance)	8041	1	\$40.50	0.00	\$0.00		Ambulance	40.50	TRUE	
September 22, 2017				12.57	157.97					251.92
Equipment/Supplies		Units	Cost/Hr or unit	Total Hrs	Total	Total Cost				TRUE
Squad 24	8692	1	\$78.90	0.32	\$24.99	\$157.97	Truck, Fire	78.90	TRUE	
Tanker 24	8690	1	\$68.00	0.00	\$0.00		Truck, Fire	68.00	TRUE	
Air Truck 24 (Rescue)	8696	1	\$93.47	0.00	\$0.00		Truck, Fire	93.47	TRUE	
Water Rescue 24 (Command)	8696	1	\$93.47	0.00	\$0.00		Truck, Fire	93.47	TRUE	
Ladder/Quint 25	8694	1	\$117.10	0.00	\$0.00		Truck, Fire Ladder	117.10	TRUE	
Engine 25	8692	1	\$78.90	0.32	\$24.99		Truck, Fire	78.90	TRUE	
Chain Saw 20"	8189	1	\$2.65	2.00	\$5.30		Chainsaw	2.65	TRUE	
Chain Saw 20"	8189	1	\$2.65	2.00	\$5.30		Chainsaw	2.65	TRUE	
Chain Saw 20"	8189	1	\$2.65	2.00	\$5.30		Chainsaw	2.65	TRUE	
Chain Saw 25"	8191	1	\$3.45	2.00	\$6.90		Chain Saw	3.45	TRUE	
Chain Saw 25"	8191	1	\$3.45	2.00	\$6.90		Chain Saw	3.45	TRUE	
Station 24 Generator	8313	1	\$34.95	0.00	\$0.00		Generator	34.95	TRUE	
Station 25 Generator	8314	1	\$50.00	0.00	\$0.00		Generator	50.00	TRUE	
Rescue 23 (Ambulance)	8041	1	\$40.50	1.93	\$78.30		Ambulance	40.50	TRUE	
Rescue 123 (Ambulance)	8041	1	\$40.50	0.00	\$0.00		Ambulance	40.50	TRUE	

September 23, 2017				14.88	297.24					264.00
Equipment/Supplies		Units	Cost/Hr or unit	Total Hrs	Total	Total Cost				TRUE
Squad 24	8692	1	\$78.90	1.05	\$82.85	\$297.24	Truck, Fire	78.90	TRUE	
Tanker 24	8690	1	\$68.00	0.00	\$0.00		Truck, Fire	68.00	TRUE	
Air Truck 24 (Rescue)	8696	1	\$93.47	0.00	\$0.00		Truck, Fire	93.47	TRUE	
Water Rescue 24 (Command)	8696	1	\$93.47	0.00	\$0.00		Truck, Fire	93.47	TRUE	
Ladder/Quint 25	8694	1	\$117.10	0.00	\$0.00		Truck, Fire Ladder	117.10	TRUE	
Engine 25	8692	1	\$78.90	0.77	\$60.49		Truck, Fire	78.90	TRUE	
Chain Saw 20"	8189	1	\$2.65	2.00	\$5.30		Chainsaw	2.65	TRUE	
Chain Saw 20"	8189	1	\$2.65	2.00	\$5.30		Chainsaw	2.65	TRUE	
Chain Saw 20"	8189	1	\$2.65	2.00	\$5.30		Chainsaw	2.65	TRUE	
Chain Saw 25"	8191	1	\$3.45	2.00	\$6.90		Chain Saw	3.45	TRUE	
Chain Saw 25"	8191	1	\$3.45	2.00	\$6.90		Chain Saw	3.45	TRUE	
Station 24 Generator	8313	1	\$34.95	0.00	\$0.00		Generator	34.95	TRUE	
Station 25 Generator	8314	1	\$50.00	0.00	\$0.00		Generator	50.00	TRUE	
Rescue 23 (Ambulance)	8041	1	\$40.50	1.85	\$74.93		Ambulance	40.50	TRUE	
Rescue 123 (Ambulance)	8041	1	\$40.50	1.22	\$49.27		Ambulance	40.50	TRUE	

12,159.78

Validation effort cross-referenced equipment time of owner's equipment time claimed against hours logged by Fire and EMS for the dates referenced. If equipment hours claimed were less than or or equal to hours logged by Fire and EMS crews for the dates listed then equipment was validated.

KLFR&EMS District Force Materials - Irma 9/7/17-9/23/17	
Equipment/Supplies	Total
Water for crews	108.36
Publix food for storm	20.63
Publix, food for crews/staff	414.42
Publix, food for crews/staff	235.06
Ice for crews	10.70
Publix, food for crews/staff	58.63
Publix, food for crews/staff	209.57
Lunch for all crews	320.00
Publix, food for crews/staff	190.26
Publix, food for crews/staff	122.02
Publix, food for crews/staff	40.71
Publix, food for crews/staff	86.98
	1,817.34

**Validation effort cross-referenced all invoices with claimed amount
and found no variances**

Staff	Date	Hours	Amount	Comments
Johnson, Jennifer	02/05/2018	3.20	400.00	worked on FEMA cat B documentation -force account equipment and forceaccount labor
Johnson, Jennifer	02/09/2018	1.80	225.00	FEMA - force account equipment ; FEMA Cat B PW info compilation
Johnson, Jennifer	02/15/2018	1.60	200.00	FEMA Cat B PW info compilation
Johnson, Jennifer	02/19/2018	5.00	625.00	FEMA Cat B PW info compilation
Johnson, Jennifer	02/23/2018	1.60	200.00	FEMA force account labor reconciliation
Johnson, Jennifer	02/26/2018	3.70	462.50	FEMA Cat B PW info gathering and reconciling
		16.90	2,112.50	

DAC cost is a contract. CRC Validation effort cross-referenced hours and cost claimed with invoices and found no variances

RESOLUTION NO. 2020 -004

**A RESOLUTION OF THE KEY LARGO FIRE RESCUE
AND EMERGENCY MEDICAL SERVICES DISTRICT,
FLORIDA, APPROVING AN INCREASE IN BOARD
COMPENSATION**

WHEREAS, the Key Largo Fire Rescue and Emergency Medical Services District (“District”) was first created by enabling legislation adopted by act of the Florida Legislature in Chapter 2005-329, Florida Statutes (the “Enabling Legislation”); and

WHEREAS, Section 4.3 of the Enabling Legislation provides that “each commissioner shall receive from the funds of the district compensation for his or her services in the amount of \$200 per month...” and that “authorization for any additional compensation shall be pursuant to chapter 191, Florida Statutes;” and

WHEREAS, Florida Statute § 191.005(4) permits a salary or honorarium to be paid to members of the District Board up to a maximum of \$500 per month for each member; and

WHEREAS, the Commissioners of the District Board have never before sought to increase the compensation paid to them in the amount of \$200 per month set forth by the District’s Enabling Legislation; and

WHEREAS, the current Commissioners of the District Board wish to implement an adjustment of the monthly salary paid to Board Members to reflect the increase in cost of living expenses in the Florida Keys realized in the fifteen years since the District’s creation;

**NOW THEREFORE, BE IT RESOLVED BY THE KEY LARGO FIRE RESCUE
AND EMERGENCY MEDICAL SERVICES DISTRICT, FLORIDA, AS FOLLOWS:**

Section 1: Recitals.

The above recitals are true and correct and are incorporated herein by reference.

Section 2: Board Compensation.

Effective October 1, 2020, the Key Largo Fire & Emergency Medical Services District shall hereby increase the compensation paid to individual Board Members from \$200 per month, to \$350.00 per month.

Section 3: Compensation Increase by Current Board Members.

Any person serving as an elected or appointed Commissioner of the Key Largo Fire & Emergency Medical Services District Board on the effective date of this resolution shall be permitted to accept the increase in compensation provided for by this resolution during their current, and any successive, term.

Section 3. Effective Date.

This Resolution shall be effective October 1, 2020.

PASSED AND ADOPTED this 14th day of September, 2020 at _____ P.M.

Tony Allen, Chairman

ATTEST:

Vicky Fay, District Clerk

(See Next Page)

APPROVED AS TO FORM AND LEGALITY
FOR THE USE AND BENEFIT OF KEY LARGO FIRE RESCUE AND
EMERGENCY MEDICAL SERVICES DISTRICT ONLY:

DISTRICT ATTORNEY

Motion to adopt by _____, Seconded by _____

FINAL VOTE AT ADOPTION

Chairman Tony Allen	_____
Commissioner Frank Conklin	_____
Commissioner George Mirabella	_____
Commissioner Bob Thomas	_____
Commissioner Danny Powers	_____

RESOLUTION 2020-005

A RESOLUTION OF THE KEY LARGO FIRE RESCUE AND EMERGENCY MEDICAL SERVICES DISTRICT, FLORIDA, ADOPTING THE TENTATIVE LEVY OF AD VALOREM TAXES FOR THE DISTRICT FOR THE FISCAL YEAR 2020-2021; PROVIDING FOR SEVERABILITY AND PROVIDING AN EFFECTIVE DATE.

WHEREAS, pursuant to special act of the legislature Chapter 2005-329, the Key Largo Fire Rescue and Emergency Medical Services District (the "District") was created and approved by vote of the electors to levy up to one mill ad valorem taxation for the purpose of providing funding for fire protection and emergency medical services in the Key Largo geographical area; and

WHEREAS, pursuant to Section 200.065, *Florida Statutes*, the District has established a proposed millage rate; and

WHEREAS, pursuant to Section 200.065(2), *Florida Statutes*, within eighty (80) days of the certification of taxable value the District is required to re-compute the proposed millage rate and adopt a tentative millage rate; and

WHEREAS, on September 14, 2020, the District held a public hearing to consider any adjustment of its proposed millage rate, to consider its tentative operating budget for Fiscal Year 2020-2021 (the "FY 2020-2021"), and adopt a tentative millage rate in accordance with Section 200.065(2)(c), *Florida Statutes*.

NOW THEREFORE, BE IT RESOLVED BY THE DISTRICT BOARD OF THE KEY LARGO FIRE RESCUE AND EMERGENCY MEDICAL SERVICES DISTRICT, FLORIDA AS FOLLOWS:

Section 1. The FY 2020-2021 tentative operating millage rate for the District is 1.0000 mill, which is greater than the rolled-back rate of 0.9588 mills by 4.30%.

Section 2. Severability. The provisions of this Resolution are declared to be severable and if any section, sentence, clause or phrase of this Resolution shall for any reason be held to be invalid or unconstitutional, such decision shall not affect the validity of the remaining sections, sentences, clauses, and phrases of this Resolution but they shall remain in effect, it being the legislative intent that this Resolution shall stand notwithstanding the invalidity of any part.

Section 3. This resolution shall be effective immediately upon its adoption.

PASSED AND ADOPTED this 14th day of September 2020.

Tony Allen, Chairman

ATTEST:

Vicky Fay - District Clerk

APPROVED AS TO FORM AND LEGALITY
FOR THE USE AND BENEFIT OF KEY LARGO FIRE RESCUE AND
EMERGENCY MEDICAL SERVICES DISTRICT ONLY:

DISTRICT LEGAL COUNSEL

Motion to adopt by _____, Seconded by _____

FINAL VOTE AT ADOPTION:

Chairman Tony Allen	_____
Vice Chairman Bob Thomas	_____
Secretary/Treasurer George Mirabella	_____
Commissioner Frank Conklin	_____
Commissioner Danny Powers	_____

RESOLUTION NO. 2020-006

**A RESOLUTION OF THE KEY LARGO FIRE RESCUE AND
EMERGENCY MEDICAL SERVICES DISTRICT, FLORIDA,
PROVIDING FOR ADOPTION OF THE TENTATIVE
BUDGET OF THE DISTRICT FOR THE FISCAL YEAR
COMMENCING ON OCTOBER 1, 2020, AND ENDING ON
SEPTEMBER 30, 2021; PROVIDING FOR SEVERABILITY:
AND PROVIDING AN EFFECTIVE DATE.**

WHEREAS, pursuant to Section 200.065, Florida Statutes the Key Largo Fire Rescue and Emergency Medical Services District, Florida (the "District") has established a proposed millage rate; and

WHEREAS, on September 14, 2020, the District Board held a public hearing to consider adjustment of its proposed millage rate, to consider its tentative operating budget for Fiscal Year 2020-2021 (the "FY 2020-2021"), and adopt a recomputed proposed millage rate in accordance with Section 200.065(2)(c), Florida Statutes.

**NOW THEREFORE, BE IT RESOLVED BY THE KEY LARGO FIRE RESCUE
AND EMERGENCY MEDICAL SERVICES DISTRICT, FLORIDA, AS FOLLOWS:**

Section 1. Budget Approved and Adopted. The tentative budget of the District for the fiscal year beginning on October 1, 2020, and ending September 30, 2021 (the "Budget") in the amount of \$7,234,705 was considered at a public hearing and is hereby approved and adopted.

Section 2. Severability. The provisions of this Resolution are declared to be severable and if any section, sentence, clause or phrase of this Resolution shall for any reason be held to be invalid or unconstitutional, such decision shall not affect the validity of the remaining sections, sentences, clauses, and phrases of this Resolution but they shall remain in effect, it being the legislative intent that this Resolution shall stand notwithstanding the invalidity of any part.

Section 3. Effective Date. This Resolution shall be effective immediately upon adoption.

PASSED AND ADOPTED this 14th day of September, 2020.

Tony Allen, Chairman

ATTEST:

Vicky Fay - District Clerk

APPROVED AS TO FORM AND LEGALITY
FOR THE USE AND BENEFIT OF KEY LARGO FIRE RESCUE AND
EMERGENCY MEDICAL SERVICES DISTRICT ONLY:

DISTRICT LEGAL COUNSEL

Motion to adopt by _____, Seconded by _____

FINAL VOTE AT ADOPTION:

Chairman Tony Allen	_____
Vice Chairman Bob Thomas	_____
Secretary/Treasurer George Mirabella	_____
Commissioner Frank Conklin	_____
Commissioner Danny Powers	_____

KEY LARGO FIRE RESCUE AND EMS DISTRICT
FISCAL YEAR 19-20
APRIL, MAY, JUNE 2020 & YTD ACTUALS VERSUS BUDGET

	Apr 20	May 20	Jun 20	Oct '19 - Jun 20	Budget	% of Budget
Revenue						
311.000 · Ad Valorem Taxes	166,149.35	56,711.83	145,814.54	3,484,468.92	3,478,108.00	100.18%
201.01 · SAFER Grant - personnel	29,032.85	6,166.67	0.00	91,271.70	164,869.00	55.36%
331.501 · FEMA Disaster Relief	0.00	0.00	0.00	2,734.76	0.00	100.0%
338.002 · ILA Remib Frm Monroe County	0.00	0.00	0.00	0.00	150,000.00	0.0%
361.100 · Interest	1,435.78	1,445.47	1,349.11	11,695.96	12,000.00	97.47%
Total Revenue	196,617.98	64,323.97	147,163.65	3,590,171.34	3,804,977.00	94.36%
Expenditures						
1100 · District Board						
511.110 · Board Member Stipends	1,000.00	1,000.00	1,000.00	9,000.00	12,000.00	75.0%
511.210 · FICA/Medicare	76.50	76.50	76.50	688.50	918.00	75.0%
511.240 · Workmens Compensation Insurance	0.00	0.00	0.00	752.00	752.00	100.0%
511.400 · Travel & Per Diem	0.00	0.00	0.00	50.00	2,700.00	1.85%
511.411 · Advertising	581.91	35.00	167.31	6,952.02	7,500.00	92.69%
511.450 · Insurance & Risk Management						
450.01 · Bond	0.00	0.00	0.00	100.00	100.00	100.0%
450.02 · Portfolio Policy & Auto	0.00	0.00	0.00	1,835.70	2,133.00	86.06%
Total 511.450 · Insurance & Risk Management	0.00	0.00	0.00	1,935.70	2,233.00	86.69%
511.470 · Printing & Binding	249.39	31.78	106.82	1,394.64	3,000.00	46.49%
511.490 · General Departmental						
490.01 · Tax Collector Fees	4,974.20	1,700.55	992.35	101,087.16	104,343.00	96.88%
490.02 · Property Appraiser Fees	15,955.98	0.00	0.00	47,867.94	56,327.00	84.98%
490.03 · Other	0.00	14.99	14.99	29.98	300.00	9.99%
Total 511.490 · General Departmental	20,930.18	1,715.54	1,007.34	148,985.08	160,970.00	92.56%
511.510 · Office Supplies	0.00	290.00	0.00	290.00	500.00	58.0%
511.540 · Dues, Subscriptions	0.00	0.00	0.00	2,064.87	3,300.00	62.57%
512.311 · District Clerk Svcs (Prof Svcs)	0.00	0.00	3,735.00	7,886.25	19,000.00	41.51%
513.320 · Accounting & Financial Svcs						
513.01 · District Audit	0.00	5,000.00	0.00	10,000.00	10,000.00	100.0%
513.02 · Financial and Accounting	2,833.80	2,164.35	3,113.00	25,544.80	60,000.00	42.58%
Total 513.320 · Accounting & Financial Svcs	2,833.80	7,164.35	3,113.00	35,544.80	70,000.00	50.78%
514.310 · Legal Services (Prof Svcs)	1,500.00	1,500.00	2,791.50	22,435.00	45,000.00	49.86%
Total 1100 · District Board	27,171.78	11,813.17	11,997.47	237,978.86	327,873.00	72.58%

KEY LARGO FIRE RESCUE AND EMS DISTRICT
FISCAL YEAR 19-20
APRIL, MAY, JUNE 2020 & YTD ACTUALS VERSUS BUDGET

	Apr 20	May 20	Jun 20	Oct '19 - Jun 20	Budget	% of Budget
1250 - Key Largo Volunteer Fire						
522.120 - Regular Salaries & Wages						
120.04 - Firefighters	49,195.39	71,341.29	42,743.09	488,019.61	751,711.00	64.92%
120.06 - Administrative Stipend	2,250.00	2,250.00	0.00	18,000.00	27,000.00	66.67%
Total 522.120 - Regular Salaries & Wages	51,445.39	73,591.29	42,743.09	506,019.61	778,711.00	64.98%
522.121 - Volunteer Pay						
121.03 - Volunteer/Line Officer Reim.	18,194.11	17,550.86	14,393.96	133,885.79	168,000.00	79.69%
Total 522.121 - Volunteer Pay	18,194.11	17,550.86	14,393.96	133,885.79	168,000.00	79.69%
522.140 - Overtime Wages	14,537.43	21,650.26	19,765.64	146,399.78	187,000.00	78.29%
522.210 - FICA/Medicare	6,439.51	8,628.60	6,055.19	60,379.62	86,729.00	69.62%
522.220 - Retirement Benefits	2,873.14	4,037.99	2,884.65	28,489.85	40,000.00	71.23%
522.230 - Life & Health Insurance	697.06	12,904.92	1,124.36	55,767.75	80,200.00	69.54%
522.240 - Workers Compensation	0.00	0.00	0.00	32,809.72	34,386.00	95.42%
522.250 - Unemployment Tax	0.00	131.30	43.30	229.36	750.00	30.58%
522.312 - Professional Services						
312.03 - Grant Writing Services	0.00	2,600.00	0.00	2,600.00	2,600.00	100.0%
312.04 - Annual Physicals	0.00	19,430.00	0.00	19,430.00	20,000.00	97.15%
312.05 - Background checks & Drug Testin	0.00	0.00	475.00	700.00	1,500.00	46.67%
Total 522.312 - Professional Services	0.00	22,030.00	475.00	22,730.00	24,100.00	94.32%
522.320 - Accounting & Financial Svcs	0.00	1,635.00	0.00	6,657.86	10,000.00	66.58%
522.400 - Travel & Per Diem	0.00	0.00	0.00	3.30	4,500.00	0.07%
522.410 - Phones - Station Phones, Cell	1,184.46	654.94	1,517.00	9,023.27	11,000.00	82.03%
522.411 - Advertising	0.00	0.00	0.00	0.00	500.00	0.0%
522.412 - Postage & Freight	0.00	14.51	23.46	138.68	500.00	27.74%
522.430 - Utilities						
430.01 - Electric	2,118.04	1,265.32	2,134.27	17,254.68	27,000.00	63.91%
430.02 - Water	787.75	713.83	671.96	6,707.10	10,000.00	67.07%
430.03 - Fire Hydrant Maintenance	0.00	0.00	0.00	12,500.00	13,750.00	90.91%
430.04 - Propane Gas	0.00	20.00	40.00	529.41	500.00	105.88%
430.07 - TV Service	388.36	396.86	416.86	3,465.52	4,700.00	73.73%
Total 522.430 - Utilities	3,294.15	2,396.01	3,263.09	40,456.71	55,950.00	72.31%
522.440 - Rent & Leases						
440.01 - Copier/Scanner/Fax Lease	0.00	719.97	432.78	2,964.24	5,000.00	59.29%

KEY LARGO FIRE RESCUE AND EMS DISTRICT
FISCAL YEAR 19-20
APRIL, MAY, JUNE 2020 & YTD ACTUALS VERSUS BUDGET

	Apr 20	May 20	Jun 20	Oct '19 - Jun 20	Budget	% of Budget
440.02 · Oxygen Tank Rental	0.00	44.70	0.00	201.15	2,505.00	8.03%
440.03 · DEP Station 25 Lease Pymt	0.00	0.00	0.00	0.00	300.00	0.0%
440.04 · Red Alert Incident Reporting	0.00	0.00	0.00	4,730.81	6,000.00	78.85%
440.05 · Fire Manager- Schedule & Time	0.00	0.00	0.00	2,095.00	2,095.00	100.0%
Total 522.440 · Rent & Leases	0.00	764.67	432.78	9,991.20	15,900.00	62.84%
522.450 · Insurance & Risk Management						
450.03 · Package Policy	0.00	0.00	0.00	50,404.12	58,638.00	85.96%
450.04 · Accident & Sickness	0.00	0.00	0.00	5,320.00	5,000.00	106.4%
450.07 · Storage Tank Liability	0.00	0.00	0.00	1,510.00	1,510.00	100.0%
450.11 · Cancer Policy	0.00	0.00	0.00	1,318.19	1,760.00	74.9%
Total 522.450 · Insurance & Risk Management	0.00	0.00	0.00	58,552.31	66,908.00	87.51%
522.46 · Repair & Maintenance						
522.460 · Repair & Maint - Equipment	1,611.03	39.49	6,112.46	13,544.97	24,650.00	54.95%
522.461 · Repair & Maint - Buildings	1,141.94	2,724.01	2,758.99	20,012.16	43,250.00	46.27%
522.462 · Repair & Maint - Vehicles	8,882.49	2,837.80	3,067.08	19,509.43	45,000.00	43.35%
Total 522.46 · Repair & Maintenance	11,635.46	5,601.30	11,938.53	53,066.56	112,900.00	47.0%
522.470 · Printing & Binding	0.00	0.00	0.00	0.00	100.00	0.0%
522.490 · General Departmental						
490.05 · Other	0.00	0.00	0.00	4,098.80	4,099.00	100.0%
490.06 · Computer/IT Services	510.00	637.50	552.50	5,162.50	5,401.00	95.58%
Total 522.490 · General Departmental	510.00	637.50	552.50	9,261.30	9,500.00	97.49%
522.491 · Training						
491.01 · Instructor Fees	0.00	4,581.98	2,622.90	9,716.46	10,200.00	95.26%
491.03 · Fire Prevention	0.00	0.00	0.00	0.00	3,250.00	0.0%
491.04 · Education, Student Text	1,625.00	0.00	174.00	3,656.50	2,500.00	146.26%
491.05 · KAPLAN online Education	0.00	0.00	0.00	4,500.00	4,500.00	100.0%
491.15 · Out of Area Training	0.00	0.00	0.00	1,750.00	5,000.00	35.0%
Total 522.491 · Training	1,625.00	4,581.98	2,796.90	19,622.96	25,450.00	77.1%
522.510 · Office Supplies	467.72	411.29	880.37	3,939.85	4,000.00	98.5%
522.520 · Operating Supplies						
520.01 · Fire Ground Safety	819.80	0.00	955.30	2,306.68	3,150.00	73.23%
520.02 · Daily Operating/Maint Supplies	0.00	568.96	2,646.65	28,103.33	28,500.00	98.61%
520.03 · Medical Supplies & Equipment	869.70	3,931.78	2,668.96	10,248.60	12,000.00	85.41%

KEY LARGO FIRE RESCUE AND EMS DISTRICT
FISCAL YEAR 19-20
APRIL, MAY, JUNE 2020 & YTD ACTUALS VERSUS BUDGET

	Apr 20	May 20	Jun 20	Oct '19 - Jun 20	Budget	% of Budget
520.05 · Stat Cleaning/Hskping Supplies	341.18	534.48	920.21	4,506.03	4,500.00	100.13%
520.06 · Firefighting Gear	2,209.00	608.10	0.00	17,162.27	17,991.00	95.39%
520.07 · Clothing & Apparel	0.00	0.00	1,692.08	11,533.51	12,342.00	93.45%
520.08 · Firefighting Foam or Sup Agnt	0.00	0.00	0.00	0.00	6,000.00	0.0%
Total 522.520 · Operating Supplies	4,239.68	5,643.32	8,883.20	73,860.42	84,483.00	87.43%
522.521 · Fuel - Gasoline	0.00	0.00	17.67	17.67	100.00	17.67%
522.522 · Fuel - Diesel	-676.26	1,270.62	0.00	5,742.43	23,500.00	24.44%
522.540 · Dues, Subscriptions	1,155.00	1,495.00	0.00	3,050.00	3,000.00	101.67%
522.6 · Capital Expenditures						
522.620 · Capital Outlay - Buildings	7,600.00	0.00	0.00	7,600.00	0.00	100.0%
522.630 · Capital Outlay-Infr. Imprvmnts	0.00	0.00	0.00	9,100.00	150,000.00	6.07%
522.640 · Capital Outlay - Equipment	0.00	1,338.65	0.00	6,344.52	6,350.00	99.91%
522.642 · Capital - Small Tools & Equip	0.00	0.00	0.00	11,872.40	14,000.00	84.8%
Total 522.6 · Capital Expenditures	7,600.00	1,338.65	0.00	34,916.92	170,350.00	20.5%
522.805 · Upper Keys Honor Guard						
805.01 · Honor Guard Travel	0.00	0.00	0.00	0.00	0.00	0.0%
522.805 · Upper Keys Honor Guard - Other	0.00	0.00	0.00	0.00	0.00	0.0%
Total 522.805 · Upper Keys Honor Guard	0.00	0.00	0.00	0.00	0.00	0.0%
Total 1250 · Key Largo Volunteer Fire	125,221.85	186,970.01	117,790.69	1,315,012.92	1,998,517.00	65.8%
1300 · Key Largo EMS						
526.120 · Regular Salaries & Wages						
120.01 · Administrative Payroll	1,945.60	778.24	3,015.68	27,141.42	56,813.00	47.77%
120.02 · Paramedic Payroll	0.00	0.00	0.00	29,997.00	75,000.00	40.0%
Total 526.120 · Regular Salaries & Wages	1,945.60	778.24	3,015.68	57,138.42	131,813.00	43.35%
526.121 · Volunteer Pay	17,282.40	17,366.00	16,215.20	143,568.20	192,000.00	74.78%
526.140 · Overtime Wages	0.00	0.00	0.00	0.00	4,600.00	0.0%
526.210 · FICA/Medicare	3,421.59	3,308.53	3,494.40	25,775.98	47,550.00	54.21%
526.220 · Retirement Contributions	0.00	500.00	187.50	1,332.50	2,500.00	53.3%
526.230 · Life & Health Insurance	776.58	0.00	0.00	7,414.30	18,000.00	41.19%
526.240 · Worker's Compensation	0.00	0.00	0.00	10,512.28	15,115.00	69.55%
526.250 · Unemployment Tax	0.00	0.00	0.00	0.00	300.00	0.0%
526.312 · Professional Services						
312.02 · Medical Director	1,500.00	1,500.00	1,500.00	15,000.00	18,000.00	83.33%

KEY LARGO FIRE RESCUE AND EMS DISTRICT
FISCAL YEAR 19-20
APRIL, MAY, JUNE 2020 & YTD ACTUALS VERSUS BUDGET

	Apr 20	May 20	Jun 20	Oct '19 - Jun 20	Budget	% of Budget
312.06 · Drug Testing & Background Check	0.00	0.00	0.00	45.00	750.00	6.0%
312.07 · Grant Writing Services	0.00	0.00	0.00	0.00	2,000.00	0.0%
Total 526.312 · Professional Services	1,500.00	1,500.00	1,500.00	15,045.00	20,750.00	72.51%
526.320 · Accounting & Financial Svcs	922.00	838.00	913.00	8,278.47	11,000.00	75.26%
526.400 · Travel & Per Diem	0.00	0.00	0.00	942.20	4,000.00	23.56%
526.410 · Phones, Station & Cell	1,156.04	962.24	963.08	9,383.44	10,500.00	89.37%
526.411 · Advertising	0.00	0.00	0.00	0.00	400.00	0.0%
526.412 · Postage & Freight	0.00	0.00	0.00	0.00	350.00	0.0%
526.430 · Utilities						
430.05 · Electric & Propane	1,070.39	603.99	1,205.68	8,688.43	11,500.00	75.55%
430.06 · Water	149.30	120.21	137.09	1,896.56	3,200.00	59.27%
Total 526.430 · Utilities	1,219.69	724.20	1,342.77	10,584.99	14,700.00	72.01%
526.440 · Rental & Leases	377.60	377.60	0.00	2,809.19	4,500.00	62.43%
526.450 · Insurance & Risk Management						
450.08 · Package Policy	0.00	0.00	9,288.52	31,565.52	33,417.00	94.46%
450.09 · Auto	0.00	0.00	2,592.00	9,362.67	10,156.00	92.19%
450.10 · Disability Insurance	0.00	0.00	0.00	2,793.87	3,500.00	79.83%
Total 526.450 · Insurance & Risk Management	0.00	0.00	11,880.52	43,722.06	47,073.00	92.88%
526.46 · Repair & Maintenance						
526.460 · Repair & Maint - Equipment	0.00	2,112.14	0.00	15,132.06	41,250.00	36.68%
526.461 · Repair & Maint - Buildings	386.99	650.00	539.00	6,086.24	25,000.00	24.35%
526.462 · Repair & Maint - Vehicles	3,586.78	340.00	2,877.94	10,814.09	25,000.00	43.26%
Total 526.46 · Repair & Maintenance	3,973.77	3,102.14	3,416.94	32,032.39	91,250.00	35.1%
526.470 · Printing & Binding	0.00	0.00	0.00	0.00	1,250.00	0.0%
526.490 · General Dept. - Misc.						
490.08 · Computer/IT Services	0.00	0.00	0.00	170.00	6,000.00	2.83%
490.10 · Employee Assistance Program	90.00	90.00	90.00	900.00	1,100.00	81.82%
490.12 · Membership & Retention	0.00	0.00	0.00	0.00	2,500.00	0.0%
Total 526.490 · General Dept. - Misc.	90.00	90.00	90.00	1,070.00	9,600.00	11.15%
526.491 · Training - Instructor Fees, Edu						
491.06 · ACE with 12-lead	0.00	0.00	0.00	0.00	2,400.00	0.0%
491.07 · ACLS/PALS	0.00	0.00	0.00	2,225.00	1,500.00	148.33%
491.08 · ClinCon or EMS Expo	0.00	0.00	0.00	960.00	1,760.00	54.55%

KEY LARGO FIRE RESCUE AND EMS DISTRICT
FISCAL YEAR 19-20
APRIL, MAY, JUNE 2020 & YTD ACTUALS VERSUS BUDGET

	Apr 20	May 20	Jun 20	Oct '19 - Jun 20	Budget	% of Budget
491.10 · Misc. Training/Books	0.00	0.00	0.00	0.00	900.00	0.0%
491.11 · Advanced Airway Management	0.00	0.00	0.00	0.00	2,400.00	0.0%
491.12 · Handtevy PALS class	0.00	0.00	0.00	0.00	1,750.00	0.0%
491.20 · Advanced Stroke Life Support	0.00	0.00	0.00	700.00	2,400.00	29.17%
491.21 · Florida Mass Casualty Triage	0.00	0.00	0.00	0.00	900.00	0.0%
491.22 · Fire EMS Academy	0.00	0.00	0.00	1,720.00		
Total 526.491 · Training - Instructor Fees, Edu	0.00	0.00	0.00	5,605.00	14,010.00	40.01%
526.510 · Office Supplies	328.69	0.00	191.04	2,657.46	2,500.00	106.3%
526.520 · Operating Supplies						
520.09 · Station Supplies	1,904.83	1,035.24	865.62	11,537.73	9,750.00	118.34%
520.10 · Medical Supplies	4,664.01	6,274.91	3,776.66	33,664.86	52,000.00	64.74%
520.11 · Uniforms & Membership Supplies	105.86	716.00	0.00	5,523.56	4,500.00	122.75%
520.13 · Small Tools	3,851.38	0.00	0.00	3,851.38	4,780.00	80.57%
Total 526.520 · Operating Supplies	10,526.08	8,026.15	4,642.28	54,577.53	71,030.00	76.84%
526.522 · Fuel - Diesel	676.26	617.96	0.00	6,768.12	14,000.00	48.34%
526.524 · Medicine & Drugs	1,295.75	574.60	1,364.08	9,090.94	22,600.00	40.23%
526.540 · Dues, Subscriptions	0.00	0.00	0.00	0.00	450.00	0.0%
526.6 · Capital Expenditures						
526.620 · Capital Outlay - Buildings	0.00	0.00	0.00	40,101.08	47,602.00	84.24%
526.641 · Capital Outlay - Vehicles	0.00	0.00	0.00	0.00	0.00	0.0%
Total 526.6 · Capital Expenditures	0.00	0.00	0.00	40,101.08	47,602.00	84.24%
Total 1300 · Key Largo EMS	45,492.05	38,765.66	49,216.49	488,409.55	799,443.00	61.09%
Total Expenditures	197,885.68	237,548.84	179,004.65	2,041,401.33	3,125,833.00	65.31%
Net Excess/(Deficiency) of Revenues Over/(Under) Expenditures	-1,267.70	-173,224.87	-31,841.00	1,548,770.01	679,144.00	228.05%
511.911 · Transfer to Veh & Equip Fund	18,750.00	18,750.00	18,750.00	168,750.00	225,000.00	75%
Net Excess/(Deficiency) of Revenues Over/(Under) Expenditures after transfer to Reserves	\$ (20,017.70)	\$ (191,974.87)	\$ (50,591.00)	\$ 1,380,020.01	\$ 454,144.00	304%



KEY LARGO VOLUNTEER AMBULANCE CORPS, INC.

98600 Overseas Highway Key Largo, Florida 33037 Phone: 305-451-2766 Fax: 305-451-1562

Business Meeting Agenda Date: JULY 14, 2020 VIA ZOOM

1. Call to Order
2. Approval of Agenda
3. Announcements
4. Public Comment
5. Approval of Minutes
6. Treasurer's Report
 - A. Revised May 2020 Report
 - B. June 2020 Report
7. Committee Reports
8. Legal Report
9. Membership Review
10. Old Business
11. New Business
 - A. Weapons Policy
 - B. EMS Annual Report
 - C. Political Activity Policy
12. Membership Discussion
13. Adjournment



KEY LARGO VOLUNTEER AMBULANCE CORPS, INC.

98600 Overseas Highway Key Largo, Florida 33037 Phone: 305-451-2766 Fax: 305-451-1562

Business Meeting

Date: July 14, 2020 via Zoom

Board members in attendance were Dawn DeBrule, Ken Edge, Tess Marra and Scott Robinson. A quorum was present. Chief Don Bock was also in attendance.

1. Meeting was called to order at 6:33 pm by President Scott Robinson.
2. Approval of Agenda
Ken Edge, seconded by Tess Marra moved approval of the agenda. Motion carried.
3. Announcements
 - A. The Chief announced that the District's Fact Finding information should be included in a 5-year future plan for both departments. Scott Robinson and Adam Schussheim volunteered to be on a committee to accomplish this and Roxy Perez will be invited to join.
 - B. The new ambulance will be purchased after the October 1, 2020-2021 budget goes into effect.
 - C. An Informational bulletin regarding masks has been created along with a bulletin concerning trauma alerts.
4. Public Comment - None
5. Approval of Minutes
Dawn DeBrule seconded by Ken Edge moved approval of the June 2020 minutes. Motion carried.
6. Treasurer's Report
 - A. Tess Marra, seconded by Ken Edge moved approval of the Revised May 2020 report. Motion carried.
 - B. Tess Marra reported a balance of \$ 47,421.64 as of June 30, 2020. Ken Edge seconded by Dawn DeBrule moved approval of the June 2020 treasurer's report. Motion carried.
7. Committee Reports None
8. Legal Report - None
9. Membership Review - None
10. Old Business - None



KEY LARGO VOLUNTEER AMBULANCE CORPS, INC.

98600 Overseas Highway Key Largo, Florida 33037 Phone: 305-451-2766 Fax: 305-451-1562

11. New Business

- A. **Weapons Policy** - The Chief presented a draft of a Weapons Policy. Ken Edge, seconded by Dawn DeBrule moved approval of the policy as written. Motion carried.
- B. **EMS Annual Report** - The 2019 Annual Report was presented. Tess Marra, seconded by Dawn DeBrule moved approval of the Report. Motion carried.
- C. **Political Activity Policy** – The Chief presented a draft Political Activity Policy. Dawn DeBrule seconded by Ken Edge moved approval of the Policy. Motion carried.

12. Membership Discussion - None

13. Adjournment

There being no further business, Tess Marra seconded by Ken Edge moved adjournment. Motion carried. Meeting adjourned at 6:47 pm.

Kay Cullen
Recording Secretary

Key Largo Volunteer Ambulance Corp Inc.
Treasurer's Report
July 2020

	Billing Account	Corp Account	Building Account	CPR Account	Certificates of Deposit	Total
Beginning Balance	\$10,943.54	\$9,262.84	\$2,440.88	\$1,616.43	\$182,193.48	\$206,457.17
<u>Revenues</u>						
Interest	0.69	0.80	0.21	0.14		1.84
Medical Fees	25,887.66					25,887.66
Medical Transcripts						0.00
KL Fire Rescue & EMS Reimb	9,999.00	16,215.20				26,214.20
Donations						0.00
Educational Income						0.00
Uncollected Income/Adjustmts	28,504.28					28,504.28
Misc Income						0.00
Total Revenues	\$64,391.63	\$16,216.00	\$0.21	\$0.14	\$0.00	\$80,607.98
<u>Expenditures</u>						
Advertising						0.00
Medical Billing Refunds						0.00
Payroll Expenses	28,659.58	22,532.98				51,192.56
Dues & Subscriptions						0.00
Professional Fees	1,303.07	960.00				2,263.07
Supplies		237.57				237.57
Bank Service Charges	69.49					69.49
Licenses						0.00
Repairs						0.00
Total Expenditures	\$30,032.14	\$23,730.55	\$0.00	\$0.00	\$0.00	\$53,762.69
Ending Balance	\$45,303.03	\$1,748.29	\$2,441.09	\$1,616.57	\$182,193.48	\$233,302.46
TRANSFERS	0.00	0.00	0.00	0.00		0.00
Balance before Adjustment	45,303.03	1,748.29	2,441.09	1,616.57	182,193.48	233,302.46
Adjustment to arrive at Actual	-33,179.01	4,631.71	0.00	0.00	0.00	-28,547.30
ACTUAL BALANCE @ MO END	\$12,124.02	\$6,380.00	\$2,441.09	\$1,616.57	\$182,193.48	\$204,755.16



KEY LARGO VOLUNTEER FIRE DEPARTMENT, INC.

1 East Drive

Key Largo, Florida 33037

305-451-2700 tel.

305-451-4699 fax

info@keylargofire.com

Business Meeting

DATE: July 14, 2020 via Zoom

AGENDA

1. Call to Order
2. Approval of Agenda
3. Announcement
4. Public Comment
5. Approval of Minutes
6. Treasurer's Report
7. Committee Reports
8. Benevolent Association Report
9. Legal Report
10. Membership Review
11. Old Business
12. New Business
 - A. Weapon's Policy
 - B. Budget
 - C. Political Activity Language
 - D. Staff Benefits Discussion
13. Membership Discussion
14. Adjournment



KEY LARGO VOLUNTEER FIRE DEPARTMENT, INC.

1 East Drive

Key Largo, Florida 33037

305-451-2700 tel.

305-451-4699 fax

info@keylargofire.com

Business Meeting

Date: July 14, 2020 via Zoom

Board members in attendance were Jason Mumper, Jonathan Ramey and Andre Castro. A quorum was present. Chief Don Bock was also in attendance.

1. Meeting was called to order at 7:08 pm by President Jason Mumper.
2. Approval of Agenda
Item D. Staff Benefits Discussion was added to the Agenda under New Business. Andre Castro seconded by Jonathan Ramey moved approval of the Amended agenda. Motion carried.
3. Announcements
New hire testing was completed. There are two vacancies; one of which was filled via promotion.
4. Public Comment
Diesel tank disposal work has started.
5. Approval of Minutes
Andre Castro seconded by Jonathan Ramey moved approval of the June 2020 minutes. Motion carried.
6. Approval of Treasurer's Report
Andre Castro seconded by Jonathan Ramey moved approval of the June 2020 Treasurer's Report. Motion carried.
7. Committee Reports
Chris Jones named the Safety Committee, the By-Law Committee and the SOP Committees as being in place. No reports were presented from these committees.
8. Benevolent Report
Curtis Tucker reported that the Benevolent is getting support from the members. Two TVs were purchased; one for each station. Appreciation was expressed to the Benevolent for providing the food for Markus Golling's leaving party. A Face Book page has been established. The goal for the Benevolent is to support more events for the membership.
9. Legal Report - None
10. Membership Review - None



KEY LARGO VOLUNTEER FIRE DEPARTMENT, INC.

1 East Drive

Key Largo, Florida 33037

305-451-2700 tel.

305-451-4699 fax

info@keylargofire.com

Old Business - None

11. New Business

- A. **Weapons Policy:** The Chief read into the record the Draft of the Weapons Policy. Discussion was held concerning the fact that there was mention of weapons under Section 100.03 of the SOPs. To avoid confusion, the draft policy will be included in the SOP update.
- B. **Budget:** The draft budget for the District has not yet been completed. Overtime numbers need to be finalized prior to submission. Two additional paid staff are being included in the proposed budget.
- C. **Political Activity Language:** Andre Castro, seconded by Jonathan Ramey, moved approval of the Political Activity Language verbiage submitted to the Board. The language will be placed on the appropriate KLVFD letterhead prior to submission to the District.
- D. **Staff Benefits Discussion:** There was discussion concerning, with specificity, which benefits the members would like to see memorialized in writing and what vehicle would be best suited for said memorialization. One use for this memorialization would be to explain, in detail, to new hires, the benefits available to them.

12. Membership Discussion

A total of 9 or 10 new volunteers will be coming onboard. Half of them will begin running shifts on 8/1 and the remainder will start on 9/1. The splitting is being done so that staff will not have to train new staff members and also supervise new volunteers at the same time.

13. Adjournment

There being no further business, upon motion and second by Andre Castro and Jonathan Ramey respectively, the meeting was adjourned at 7:54 PM

Kay Cullen
Recording Secretary

**Key Largo Volunteer Fire Department
Treasurer's Report
July 2020**

	<u>Payroll/Reimb</u>	<u>Corp Account</u>	<u>District Expenses</u>	<u>Tee Shirt</u>	<u>Total</u>
Beginning Balance	\$44,708.87	\$5,028.35	\$613.45	\$3.19	\$50,353.86
<u>Revenues</u>					
Revenues & Reimbursements	132,678.92				\$132,678.92
Donations					0.00
T-Shirts/Sweaters					0.00
Misc Income - State of Florida					0.00
Interest	3.77	0.43	0.05		4.25
Total Revenues	\$132,682.69	\$0.43	\$0.05	\$0.00	\$132,683.17
<u>Expenditures</u>					
Payroll Expenses	125,217.40	0.00	0.00	0.00	\$125,217.40
Employee's Share Health Insurance	-3,200.49	0.00	0.00	0.00	-3,200.49
Health Insurance	8,096.14	0.00	0.00	0.00	8,096.14
Licenses	0.00	0.00	0.00	0.00	0.00
Background Checks	0.00	0.00	0.00	0.00	0.00
Postage	0.00	0.00	0.00	0.00	0.00
Travel	0.00	0.00	0.00	0.00	0.00
Training	0.00	0.00	0.00	0.00	0.00
Supplies	1,249.21	0.00	0.00	0.00	1,249.21
Dues & Subscriptions	0.00	0.00	0.00	0.00	0.00
Total Expenditures	\$131,362.26	\$0.00	\$0.00	\$0.00	\$131,362.26
Ending Balance	\$46,029.30	\$5,028.78	\$613.50	\$3.19	\$51,674.77
TRANSFERS					0.00
Balance before Adjustment	\$46,029.30	\$5,028.78	\$613.50	\$3.19	\$51,674.77
Adjustment to arrive at Actual	34.16	0.00	0.00	0.00	34.16
ACTUAL BALANCE @ MO END	\$45,995.14	\$5,028.78	\$613.50	\$3.19	\$51,640.61
*Payroll Liabilities	\$34.16				
Fixed Asset Purchases	\$0.00				
Total Adjustments	\$34.16				

Manpower Analysis by Incident

Key Largo Fire Department

Date Range: From 08/01/2020 to 08/31/2020

Fixed Property:

Company: All Companies

Incident Type	Incident Count	Number Attended	Average Attended	Total Length (hrs)	Average Length (hrs)	Average Man Hours	Total Man Hours
100-Fire, other	2	8	4.00	0.70	0.35	1.40	2.80
131-Passenger vehicle fire	1	5	5.00	1.27	1.27	6.35	6.35
200-Overpressure rupture, explosion, overheat other	1	7	7.00	0.35	0.35	2.45	2.45
311-Medical assist, assist EMS crew	5	19	3.80	1.58	0.32	1.09	5.47
320-Emergency medical service incident, other	1	2	2.00	0.87	0.87	1.74	1.74
321-EMS call, excluding vehicle accident with injury	16	42	2.63	8.48	0.53	1.56	24.97
322-Motor vehicle accident with injuries	7	37	5.29	5.25	0.75	4.15	29.06
324-Motor vehicle accident with no injuries.	1	4	4.00	0.47	0.47	1.88	1.88
411-Gasoline or other flammable liquid spill	1	5	5.00	0.05	0.05	0.25	0.25
444-Power line down	1	2	2.00	0.25	0.25	0.50	0.50
500-Service Call, other	1	5	5.00	0.35	0.35	1.75	1.75
550-Public service assistance, other	1	5	5.00	0.10	0.10	0.50	0.50
551-Assist police or other governmental agency	1	3	3.00	1.00	1.00	3.00	3.00
561-Unauthorized burning	2	11	5.50	0.40	0.20	1.11	2.22
611-Dispatched & canceled en route	8	13	1.63	0.91	0.11	0.12	0.94
622-No incident found on arrival at dispatch address	1	7	7.00	0.45	0.45	3.15	3.15
700-False alarm or false call, other	5	20	4.00	1.41	0.28	1.04	5.20
733-Smoke detector activation due to malfunction	2	9	4.50	0.35	0.18	1.18	2.35
734-Heat detector activation due to malfunction	1	7	7.00	0.35	0.35	2.45	2.45
745-Alarm system activation, no fire - unintentional	3	11	3.67	1.82	0.61	2.79	8.37
900-Special type of incident, other	5	11	2.20	2.36	0.47	1.27	6.36
Blank. Incident Type not Entered	3	0	0.00	0.00	0.00		0.00
Total and Averages for all Incident Types	69	233	3.38	28.77	0.42		111.76

NFPA Analysis Report

Key Largo Fire Department

Date Range: From 08/01/2020 to 08/31/2020

Fixed Property:

FIRE IN STRUCTURES BY FIXED PROPERTY USE (OCCUPANCY) (All in Section A Incident Type 110-129)	Number of Fires	Number of Civilian Fire Casualties. If none, write 0.		Estimated Property Damage from Fire. If no loss, write 0.
		Deaths	Injuries	
1. Private Dwellings (1 or 2 family), Including mobile homes (FPU 400-419)	0	0	0	\$0
2. Apartments (3 or more families) FPU 429 or FPU 439)	0	0	0	\$0
3. Hotels and Motels (FPU 449)	0	0	0	\$0
4. All other residential (dormitories, boarding houses, tents, etc.) (FPU 459-499)	0	0	0	\$0
5. TOTAL OTHER RESIDENTIAL FIRES (SHOULD BE SUM OF LINES 1 THROUGH 4)	0	0	0	\$0
6. Public Assembly (church, restaurant, clubs, etc.) (FPU 100-199)	0	0	0	\$0
7. Schools and Colleges (FPU 200-299)	0	0	0	\$0
8. Health Care and Penal Institutions (hospitals, nursing homes, prisons, etc.) (FPU 300-399)	0	0	0	\$0
9. Stores and Offices (FPU 500-599)	0	0	0	\$0
10. Industry, Utility, Defense, Laboratories, Manufacturing (FPU 600-799)	0	0	0	\$0
11. Storage in Structures (barns, vehicle storage garages, general storage, etc.) (FPU 800-899)	0	0	0	\$0
12. Other Structures** (outbuildings, bridges, etc.) (FPU 900-999)	0	0	0	\$0
13. TOTALS FOR STRUCTURE FIRES (SHOULD BE SUM OF LINES 5 THROUGH 12)	0	0	0	\$0

B. OTHER FIRE AND INCIDENTS				
14a. Fires in Highway Vehicles (autos, trucks, buses, etc.) (IT 131-132, 136-137)	1	0	0	\$2,500
14b. Fires in Other Vehicles (planes, trains, ships, construction or farm vehicles, etc.) (IT 130, 133-135, 138)	0	0	0	\$0
15. Fires outside of Structures with Value Involved, but Not Vehicles (outside storage, crops, timber, etc. (IT 140, 141, 161, 162, 164, 170-173)	0	0	0	\$0
16. Fires in Brush, Grass, Wildland (excluding crops and timber) with no value involved. (IT 142-143)	0	0	0	
17. Fires in Rubbish, Including Dumpsters (outside of structures), with no value involved. (IT 150-155)	0	0	0	
18. All Other Fires. (IT 100, 160, 163)	2	0	0	\$0
19. TOTAL FOR FIRES (SHOULD BE SUM OF LINES 13 THROUGH 18)	3	0	0	\$2,500
20. Rescue, Emergency Medical Responses (ambulance, EMS, rescue) (IT 300-381)	22			
21. False Alarm Responses (malicious or unintentional false calls, system malfunctions, bomb scares) (IT 700-746)	11			
22. Mutual Aid or Assistance Responses Given	12			
23a. Hazardous Materials Responses (spills, leaks, etc.) (IT 410-431)	1			
23b. Other Hazardous Conditions (arcing wires, bomb removal, power line down, etc.) (IT 440-482, 400)	1			
24. All Other Responses (smoke scares, lock-outs, animal rescues, etc.) (IT 200-251, 500-699, 800-911)	19			
25. TOTAL FOR ALL INCIDENTS (SHOULD BE SUM OF LINES 19 THROUGH 24)	69			

Based on what is reported in lines 5 and 13 for number of fire above, please report separately:

Confined fires (e.g., cooking fires confined to cooking vessel, or chimney fire that did not spread beyond chimney, or confined trash fires) IIT 113 - 118), and Nonconfined fires (IT 110 - 112, 120 - 123).

	Number of Confined Fires	Number of Nonconfined Fires
5. Residential Fires (line 5 above)	0	0
13. Structure Fires (line 13 above)	0	0

BREAKDOWN OF FALSE ALARM RESPONSES	
1. Malicious, Mischievous False Call (IT 710-715)	0
2. System Malfunction (IT 700-739)	3
3. Unintentional (tripping on Interior device accidentally etc.) (IT 740-749)	3
4. Other False Alarms (bomb scares, etc.) (IT 721, 700)	5

Incident Run Log

Key Largo Fire Department

Date Range: From 08/01/2020 to 08/31/2020

Fixed Property:

Company: All Companies

Sorted by: Not selected

Date	FDID	Incident#	Alarm	###	Address	Suite	Type	Lgth
08/18/2020	38032	2020-000504	10:32	1016	OVERSEAS HWY	D80	Fire, other	0.3
08/30/2020	38032	2020-000534	19:39	136	BUTTONWOOD AV 101.5		Fire, other	0.3
08/14/2020	38032	2020-000494	16:45	1015	OVERSEAS HWY		Passenger vehicle fire	1.3
08/31/2020	38032	2020-000535	11:14	110	OVERSEAS HWY		Overpressure rupture, explosion, overheat other	0.3
08/08/2020	38032	2020-000483	16:02	1024	OVERSEAS HWY		Medical assist, assist EMS crew	0.4
08/21/2020	38032	2020-000513	18:48	81	2ND ST		Medical assist, assist EMS crew	0.1
08/24/2020	38032	2020-000517	08:16	1313	OCEAN BAY DR		Medical assist, assist EMS crew	0.2
08/27/2020	38032	2020-000521	05:41	4	BLACKWATER LN NORTH	114	Medical assist, assist EMS crew	0.4
08/31/2020	38032	2020-000538	22:12	478	SUMMERLAND RD		Medical assist, assist EMS crew	0.6
08/29/2020	38032	2020-000532	14:13	1079	OVERSEAS HWY		Emergency medical service incident, other	0.9
08/01/2020	38032	2020-000466	11:42	1053	OVERSEAS HWY		EMS call, excluding vehicle accident with injury	0.1
08/04/2020	38032	2020-000476	04:38	878	NARRAGANSETT LN		EMS call, excluding vehicle accident with injury	0.4
08/07/2020	38032	2020-000480	14:11	100	MORRIS LN	B6	EMS call, excluding vehicle accident with injury	0.5
08/08/2020	38032	2020-000482	15:04	1079	OVERSEAS HWY		EMS call, excluding vehicle accident with injury	0.6
08/11/2020	38032	2020-000487	11:33	11	OCEAN DR CR 905	NORT	EMS call, excluding vehicle accident with injury	0.3
08/14/2020	38032	2020-000495	20:22	5	GULFSTREAM DR		EMS call, excluding vehicle accident with injury	0.3
08/15/2020	38032	2020-000497	16:41	325	CALUSA ST	56	EMS call, excluding vehicle accident with injury	0.0
08/15/2020	38032	2020-000498	20:48	1079	OVERSEAS HWY	303	EMS call, excluding vehicle accident with injury	1.1
08/16/2020	38032	2020-000499	11:14	1014	OVERSEAS HWY		EMS call, excluding vehicle accident with injury	0.4
08/16/2020	38032	2020-000501	23:04	9	OAKWOOD AVE		EMS call, excluding vehicle accident with injury	0.3
08/21/2020	38032	2020-000510	10:30	4	BLACKWATER LN NORTH	305	EMS call, excluding vehicle accident with injury	0.5
08/21/2020	38032	2020-000511	15:16	108.	US1		EMS call, excluding vehicle accident with injury	0.4
08/22/2020	38032	2020-000514	20:01	354	VACA RD		EMS call, excluding vehicle accident with injury	0.5
08/26/2020	38032	2020-000518	14:50	1026	OVERSEAS HWY		EMS call, excluding vehicle accident with injury	0.7
08/29/2020	38032	2020-000526	16:30	1026	OVERSEAS HWY		EMS call, excluding vehicle accident with injury	0.6
08/31/2020	38032	2020-000537	17:10	1016	OVERSEAS HWY	94	EMS call, excluding vehicle accident with injury	1.5
08/02/2020	38032	2020-000471	19:37	9760	OVERSEAS HWY		Motor vehicle accident with injuries	0.4
08/07/2020	38032	2020-000481	23:44	1006	OVERSEAS HWY		Motor vehicle accident with injuries	1.2
08/09/2020	38032	2020-000485	10:45		US1	NB	Motor vehicle accident with injuries	0.7
08/12/2020	38032	2020-000490	16:14	1026	OVERSEAS HWY		Motor vehicle accident with injuries	0.5
08/18/2020	38032	2020-000506	17:46		SNAPPER LANE / 95.3 MM OC	NB	Motor vehicle accident with injuries	0.4
08/26/2020	38032	2020-000520	16:03		TRANSYLVANIA AVE / 103.4		Motor vehicle accident with injuries	1.0
08/29/2020	38032	2020-000527	17:45		TARPON BASIN DR/101.5MM		Motor vehicle accident with injuries	1.1
08/02/2020	38032	2020-000470	17:17	9760	OVERSEAS HWY		Motor vehicle accident with no injuries.	0.5
08/21/2020	38032	2020-000512	16:39	1002	OVERSEAS HWY	SB	Gasoline or other flammable liquid spill	0.1
08/27/2020	38032	2020-000523	12:24	107	JASMINE DR		Power line down	0.3
08/03/2020	38032	2020-000474	11:07		REEF ROAD 106 MM		Service Call, other	0.3
08/23/2020	38032	2020-000515	16:25	9981	OVERSEAS HWY		Public service assistance, other	0.1
08/17/2020	38032	2020-000503	16:12		CARD SOUND RD / 905		Assist police or other governmental agency	1.0
08/03/2020	38032	2020-000475	14:39	1049	OVERSEAS HWY	4	Unauthorized burning	0.2
08/20/2020	38032	2020-000508	20:40	19	GALE PL / 101.5 MM OC		Unauthorized burning	0.2
08/01/2020	38032	2020-000467	20:33	4	BLACKWATER LN NORTH	114	Dispatched & canceled en route	0.0
08/02/2020	38032	2020-000468	04:24	1047	OVERSEAS HWY		Dispatched & canceled en route	0.1
08/02/2020	38032	2020-000469	16:24	23	EXUMA		Dispatched & canceled en route	0.0
08/02/2020	38032	2020-000472	20:12	1060	OVERSEAS HWY		Dispatched & canceled en route	0.5
08/24/2020	38032	2020-000516	07:00	9817	OVERSEAS HWY		Dispatched & canceled en route	0.0
08/29/2020	38032	2020-000528	22:15	9960	OVERSEAS HWY		Dispatched & canceled en route	0.0
08/29/2020	38032	2020-000529	23:30	9970	OVERSEAS HWY		Dispatched & canceled en route	0.1
08/30/2020	38032	2020-000533	13:47	1006	OVERSEAS HWY		Dispatched & canceled en route	0.2
08/18/2020	38032	2020-000505	11:54	136	MARINA AVE		No incident found on arrival at dispatch address	0.5
08/08/2020	38032	2020-000484	23:33	9700	OVERSEAS HIGHWAY		False alarm or false call, other	0.1
08/20/2020	38032	2020-000509	22:58	15	ORANGE DR		False alarm or false call, other	0.3
08/29/2020	38032	2020-000525	09:40	86	AVENUE E		False alarm or false call, other	0.2
08/29/2020	38032	2020-000531	10:15	1040	OVERSEAS HWY		False alarm or false call, other	0.5
08/31/2020	38032	2020-000536	12:33	9943	OVERSEAS HWY		False alarm or false call, other	0.2
08/05/2020	38032	2020-000477	16:40	112	COASTAL DR		Smoke detector activation due to malfunction	0.0
08/11/2020	38032	2020-000488	14:27	9975	OVERSEAS HWY		Smoke detector activation due to malfunction	0.4
08/07/2020	38032	2020-000479	13:13	9745	OVERSEAS HWY		Heat detector activation due to malfunction	0.3
08/03/2020	38032	2020-000473	11:03	9745	OVERSEAS HWY		Alarm system activation, no fire - unintentional	0.5

Date	FDID	Incident#	Alarm	###	Address	Suite	Type	Lgth
08/06/2020	38032	2020-000478	00:29	9750	OVERSEAS HWY	1	Alarm system activation, no fire - unintentional	1.1
08/12/2020	38032	2020-000489	10:46	1053	OVERSEAS HWY		Alarm system activation, no fire - unintentional	0.3
08/11/2020	38032	2020-000486	08:08	1	EAST DRIVE 99MM OC		Special type of incident, other	0.0
08/12/2020	38032	2020-000491	16:27	1048	OVERSEAS HWY		Special type of incident, other	0.7
08/13/2020	38032	2020-000493	20:32	9863	OVERSEAS HIGHWAY		Special type of incident, other	1.0
08/17/2020	38032	2020-000502	14:24		REEF ROAD 106 MM		Special type of incident, other	0.0
08/19/2020	38032	2020-000507	09:20	75	MUTINY PL		Special type of incident, other	0.7
08/16/2020	38032	2020-000500	13:53		OCEAN BAY DR / 99.5 MM	NB		0.0
08/27/2020	38032	2020-000522	12:01	1000	OVERSEAS HWY			0.0
08/28/2020	38032	2020-000524	12:42		REEF ROAD 106 MM			0.0








Total Number of Incidents: 69
Total Length of Incidents: 28.5 Hours

Alarms by Day of Week

Key Largo Fire Department

Date Range: From 08/01/2020 to 08/31/2020

Fixed Property:

Day of Week		Totals
Sunday		12
Monday		11
Tuesday		7
Wednesday		7
Thursday		7
Friday		10
Saturday		15

No Date 0
Total Alarms 69

Key Largo Fire Department Loss/Gain Summary 2020 (as of 9/1/20)

***Between 2013-2020**

-We have lost 138 members

-This is an average of approx. 19.7 members a year

***Between 2016-2020**

-We have lost 80 members

- We have lost 29 members that had more than 2 years of experience

-We have lost 17 driver/engineers

-We have lost 6 paid employees

***In 2020 (as of 9/1/20)**

-We have lost 12 members

-We currently have 37 active members on our roster

-20 of our members have an experience level of 2 years or less

****out of those 20, 11 members have 1 year or less of experience***

-We have 14 drivers

*11 drivers are paid staff

*2 drivers are home shifters

*1 driver is volunteers

-We have lost 22 members to Monroe county Fire in the last 5 years

-We have lost 3 Paid staff to Monroe County in the last 4 years

-We have lost 11 paid staff total, in the past 7 years

*Between 2016-2017 38 members were brought in

*Between 2016-2017, 43 members left

*Between 2018-2019, 24 members were brought in

*Between 2018-2019, 25 members have left

*Between 2019-2020, 16 members were brought in

*Between 2019-2020, 21 members have left

* In 2020, 12 members have left

2013-2020

Years of Exp/members lost

1 or Less-86

2-15

3-7

4-8

5-3

6-5

7-6

8-2

9-4

10-0

10+-9